

LANDS & MINERAL RESOURCES



ANNUAL REPORT

For the year ending 31 , December, 2013



CONTENTS

1	Letter to the Prime Minister & Minister for Lands & Mineral Resources
2	Permanent Secretary's Overview
3	Agency Roles & Responsibilities
4	Our Vision, Mission & Values
5	Management Structure
6	Department of Lands & Survey <ul style="list-style-type: none">a) Land Administration & Managementb) Land Surveyc) Land Valuationd) Land Use Unite) Geospatial Information Management
16	Mineral Resources Department <ul style="list-style-type: none">a) Mines Divisionb) Geological Services Divisionc) Geological Survey & Information Division
24	Corporate Services Division
26	Consolidated Financial Statements
45	Facts & Figures

List of Tables & Figures

LIST OF FIGURES

Figure 1 Mineral Investigation Project at Rakiraki	47
Figure 2 Mineral Investigation Project at Ovalau	47

LIST OF TABLES

Table 1 Land Use Division Achievements 2013	45
Table 2 Land Management Division Achievements 2013	46
Table 3 Land Valuation Division Achievement	46
Table 4 List of Community Boreholes drilled & status	48
Table 5 Geotech drill holes and locations	48
Table 6 Number of project assessments conducted	49
Table 7 Production of Gold (Au) and Silver (Ag) for 2012/2013	49
Table 8 Production of Bauxite for 2012/2013	49
Table 9 Revenue collected for the year 2013 (Mines Division)	50
Table 10 Overseas Training Attended	51
Table 11 Local Courses Attended	53

Letter to the Honourable Prime Minister & Minister for Lands & Mineral Resources



Ministry of Lands & Mineral Resources
Head Office
1 Taukei Trust Fund Complex
Nasase, Suva
(South Wing Ground Floor & First Floor)
P O Box 2222
Government Buildings, Suva, Fiji
Ph: (679) 3239704 Fax: (679) 3239757
Website: www.lands.gov.fj



30th May, 2014

**Honourable Ratu Voreqe Bainimarama,
Prime Minister and Minister for Lands & Mineral Resources,
Government Buildings,
SUVA**

Dear Sir,

I am honoured to present to you the Annual Report covering the work of the Ministry of Lands and Mineral Resources, for 2013.

The report is submitted in accordance with the obligations specified within my contract of employment with the Public Service Commission. It is in line with the Finance Management Act of 2004.

With this report, the staff of the Ministry and I, wish to express our sincere gratitude for the privilege to work under your leadership. We also pledge our commitment towards achieving Government's national vision and expectations from Fiji's state lands, minerals and groundwater resources sector, as articulated in the Peoples Charter for Change, Peace and Progress and the Roadmap to Democracy and Sustainable Socio-Economic Development, 2009 -2014.

Yours faithfully,

T G Bosewaqa (Mr)
Permanent Secretary

'Through basic steps, and team efforts, the ideals of working smart are taking root in the ministry.'



PSLMR Tevita Boseiwaqa

With the vision to pursue growth through smart management of lands & minerals; the ministry was challenged to reassess the status quo and re-position itself to work smarter, for a fair return on budgeted programs.

This was underscored by the pressing need to implement government's reforms on lands, minerals and ground water resources. Strong measures were taken to address outstanding administrative and facilitative services to our customers, through the development and consolidation of Standard Operating Procedures [SOP]; improved coordination internally; and strengthening of the divisions to facilitate the decentralized functions and decision making process, of the ministry.

Special effort was made to consult with our customers through roadshows, community visits and public awareness. From feedbacks we noted that land issues will continue to be a sensitive matter for stakeholders and we cannot always please all parties with the decisions that we make. What we did instead, was to change some of the things within our control, these include strengthening staff capacity where we have found to be lacking, putting in place guidelines to ensure that staff do things right the first time. At the same time, we established a Harmonisation taskforce to verify land lease details on the ground with filed records. The latter was imperative to our goals to use technology as the means to analyse existing data and facilitate Business Process Re-engineering opportunities to improve our service delivery.

With this renewed sense of purpose the management and staff had set itself a mammoth task. Through basic steps, and team efforts, the ideals of working smarter are taking root in the ministry. Our efforts were rewarded with an unprecedented SFCCO rating of 92.10 % for Annual Corporate Plan outputs, achieved at the end of 2013; and the attainment of the Achievements Awards in the Public Service Excellence Awards after a lapse of two years.

The ministry has an important role to play in Fiji's economic prospects. We are optimistic, that government's intentions can be achieved if the ministry's structures, legislations/policies and workforce, receive equal attention in order to sustain the change and reforms, the ministry urgently requires.

We will to vigorously extend this effort in 2014.

The Ministry of Lands & Mineral Resources is one of government's key economic stakeholders in terms of developing resource based sectors. In the past couple of years, this role has been intensified as government taps into the nation's rich resource base, for an economically vibrant Fiji. In this capacity the ministry undertakes two critical programmes;

1. **Department of Lands & Survey** - is responsible for the administration, development and management of all State land activities. Activities under this programme include Land Surveying and Valuation, Development and Maintenance of State Land and Geographic Information Systems and the Land Use Unit, which coordinates the implementation of Government's Land Reform initiatives to improve socio-economic growth, focusing on equitable returns to landowners and the security of tenure for the tenants. Functions and responsibilities of the department are further categorized under the following entities:

- State Land Management Division
- Land Use Unit
- Land Survey Division
- Geospatial Division
- Land Valuation Division
- Corporate Services Division

2. **Department of Mineral Resources** - oversees and facilitates development of the country's mineral and groundwater resources. It undertakes studies in relation to geographical hazard assessment which includes earthquake and tsunami monitoring, mineral and groundwater development and manages the development of the mining and quarrying sector with a mandate under the Mining, Petroleum (Exploration and Exploitation), Quarries, Explosives and Continental shelf Acts. The department consists of four divisions which constitutes the overall mining and groundwater resources. These are namely the;

- Geological Services Division
- Geological Survey & Information Division
- Mining Division

At the beginning of 2013, the management and staff of the ministry through a consultative process agreed to a vision that embodied our aspirations. We agreed, from customer and stakeholder feedbacks that our policies, legislations and systems & processes, were insufficient to sustain the reforms necessitated by government.

To commit to our goals of a better organization, we identified smart management for growth as a key element for the ministry in terms of our services, our workforce and our programmes.

To drive the vision, we acknowledge that there are key outstanding issues that need to be straightened out and certain values embraced by the ministry to realize the vision.

OUR VALUES

- ❖ **RESPECT** - for diversity of ideas, backgrounds and cultures
- ❖ **COMMITTMENT** – to working together to meet national expectations
- ❖ **CUSTOMER SATISFACTION** – responsive to the needs of our customers
- ❖ **GOOD GOVERNANCE** – upholding the principles of good governance
- ❖ **INTEGRITY & FAIRNESS** – to make decisions objectively and ethically
- ❖ **TRANSPARENCY & OPENESS** – in all our dealings

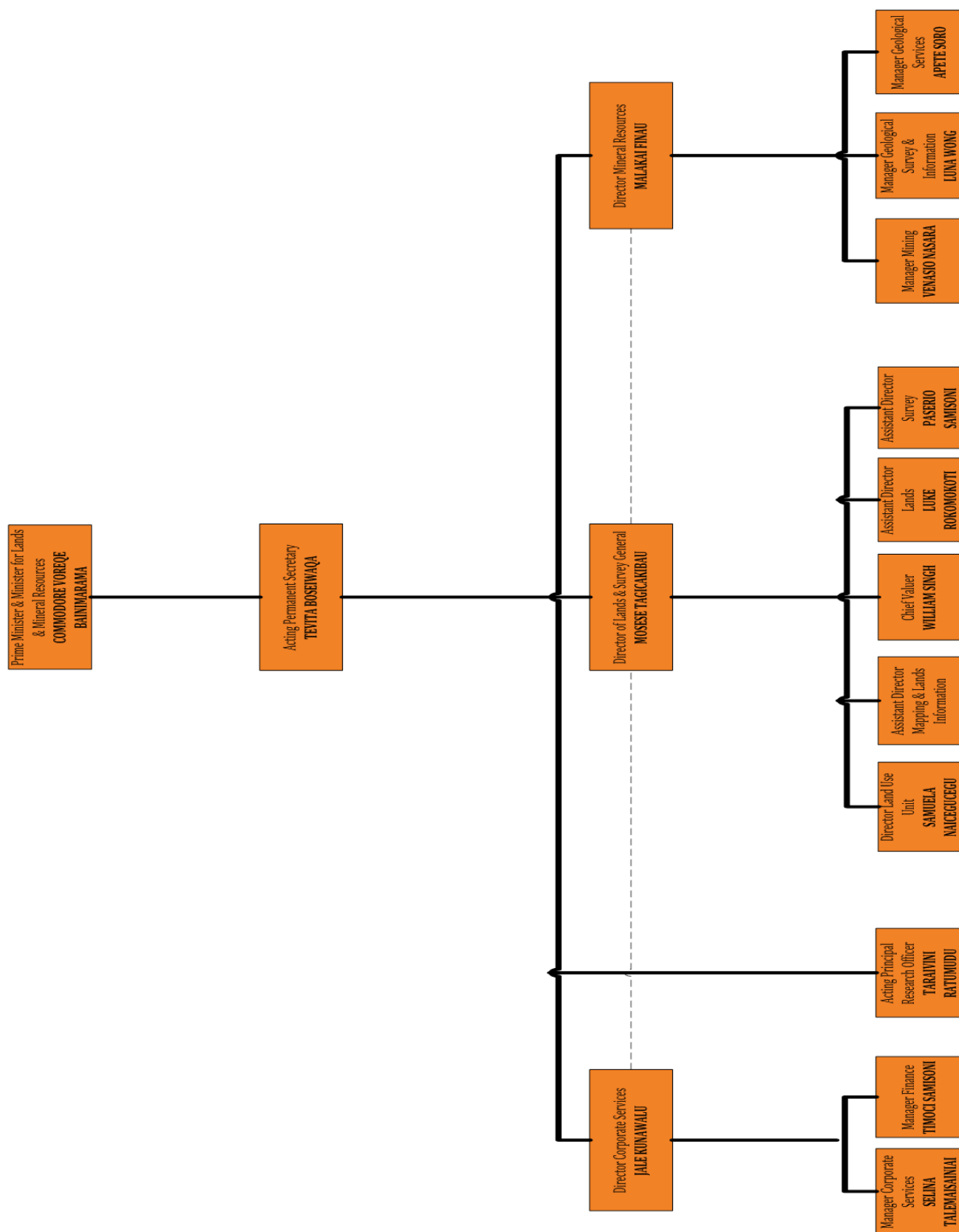
Our Vision

‘Our Lands & Minerals -Smart Management for Growth ’

Our Mission

Laying the Platform;

- . Vigorously implement government’s reforms and policy initiatives on lands, minerals and groundwater resources
- . Provide outstanding administrative and facilitate services to our customers
- . Keeping abreast with technological changes and modern approaches to ensure timely and quality services
- . Improving revenue collection to assist with government nation building efforts;
- . Embracing a corporate culture that is based on ethical and moral values;
- . Molding team leaders and members to be agents of change;
- . Developing a sense of societal and environmental responsibility;
- . Recruiting, developing, motivating, rewarding and retaining capable personnel through good leadership and conducive working environment



Output 7: Client Complaints Investigations – Land Management Services

Output 11: Land Management Services – Lease and Valuation and State Land Management, Land Survey and Development

A/ Director Lands

P. Prasad

A/Asst. Director Lands

W. Singh

Divisional Land Manager West

I. Navunisaravi

A/ Divisional Land Manager Central Eastern

S. Kumar

A/Divisional Land Manager North

J. Vuniamatana & A. Dayal

A/Principal Lands Officer

T. Ratumudu

Highlight

- ❖ In line with ACP target 2013, the Division managed to surpass its annual target of 3500 by processing 4681 legal documents for the year ending 2013.
- ❖ Developing of the draft SOP for Lands Administration

Overview

The Lands Administration Division is responsible for one of the major products of the Ministry. In this capacity the division is often referred to as the heart of land operations because it deals with the issuance of state land leases and licenses.

It also facilitates the administration of State Land in Fiji which involve services such as the processing of consent to land dealings, processing of lease applications, preparation, stamping and registration of leases, licenses and other land related legal documents in compliance to the provisions of the State Lands Act, Land Transfer Act, Property Law Act, Land Sales Act, Land Acquisition Act, Agricultural Land Tenancy Act, State Land Policies and State Land Standard Operation Procedures.

The Division consists of four (4) units strategically positioned at each divisional office;

1. the Divisional Lands Office–Western,
2. Divisional Lands Office-Northern,
3. Divisional Lands Office-Central/Eastern and
4. Headquarters.

A total of 21 staff facilitates the operation of the entire Lands Division headed by the Assistant Director of Lands and assisted by the Principal Lands Officer who is coordinating the operations of the entire Lands unit of each Division from Headquarters.

Targeted outputs are derived from the stipulated Annual Business Plans for every sections; which is aligned to the Annual Corporate Plan (MLMRCP)



Challenges

In the past, the division was largely neglected by the management. Consequently, it was inundated with complaints and criticism, related to turnaround time for granting of consents to land dealings and general issues on leasing and licensing.

Indeed concise concern/feedback was taken constructively instigating internal upgrading by management. This resulted in the strengthening of the land management division and the appointment of graduates with Land Management background. This initiative has positively impacted the output of the division as evident in the successful achievement of annual corporate plan outputs.

All Lands officers have been guided to adhere to the requirements of the SOP while performing their duties.

Way Forward

Successful implementation of Lands Administration Standard Operation Procedure (SOP) 2014 and strategic approach assistance to the Division[s] in ensuring consistency and timely delivery of services to our clients.

All Lands officers have been guided to adhere to the requirements of the SOP while performing their duties.

Therefore all operations are to be conducted in a corporate culture as captured in the Public Service Commission Service Excellence Awards Framework.

Mr. David Chang*Act. Surveyor General***Mr. Asakaia Tabua***Act. Principal Surveyor Control***Mr. Munil Dutt***Senior Surveyor Central Eastern***Mr. Vakawale Waqawai***Act Senior Surveyor Western***Mr. Asheesh Dayal***Senior Surveyor Northern*

SECTIONS

1. Control Section
2. Central Eastern
3. Western
4. Northern



Overview

The Survey Division is one of the major divisions within the Ministry assigned to attend to various survey works requested from various stakeholders. The Division deals with the Regulation and Checking of all land surveys attended by Registered Surveyors in accordance with the Surveyor Act Cap. 260 and Surveyors Regulation.

The Survey Division plays a key role in achieving the Government's main objective in Pillar 6 i.e. "Making more land available for Productive and Social Purposes", meaning carrying out proper land surveys for registration of legal leases to successful applicants.

Core Responsibilities

There are four sections in the survey division tasked with different government deliverable. The Control Section is earmarked to develop and provide the network of survey control system nation-wide which integrates the many isolated surveys implemented by either government or individual surveyors on behalf of their clients throughout the country.

The control systems established are permanent and are the basis for all development work in Fiji such as engineering surveys, cadastral surveys, topographical surveys, photogrammetric surveys and construction works. All control marks established around Fiji are of high precision and accessible.

The three divisional sectional offices are tasked to carry out survey of land transfer, engineering, topographical, building & engineering set out (where appropriate), mahogany lease surveys in Nukurua and Naboutini and surveys of Government Institutions leasing iTaukei Land.

Highlights

The highlight for the survey division is the implementation of the following capital projects;

✓ **Development of State Land**

To develop vacant or underutilized state land for industrial subdivision or residential subdivision achieving Pillar 6 on peoples charter making more land available for productive and social purposes.

✓ **Maintenance of Existing Subdivision**

The purpose of this project is to upgrade and improve infrastructure, public utilities and amenities in existing subdivisions on state lands to enhance healthy living standard in urban area

✓ **Survey of Mahogany Plantations**

The project is to survey the un-survey mahogany lease on iTaukei land to determine accurate acreage of each lease lot for proper lease registration.

✓ **Survey of Namosi TLC Boundaries**

To demarcate and survey the various Mataqali TLC land boundaries within the tikina of Namosi and its environs to provide legal parcel descriptions for registration.

✓ **National Geodetic Infrastructure**

Geodetic Survey control framework and connect to the National framework system in areas where none in place and/or upgrade the ones that need upgrading to ensure that survey control marks are easily accessible to surveyors carrying out work in most parts of Fiji, particularly in areas where developments are focused.

✓ **Replacement of Survey Equipment**

The project is to replace obsolete survey instrument and accessories for efficiency and accuracy in actual survey works. The factor in having modern equipment' is the changing technology, which enables surveyor to carry out tasks in a very limited time, thus saving the valuable man-hours both in the field and in the office.

Challenges

There are challenges Surveyors face whilst carrying out their duties. The physicality of the terrain, the remoteness of the work site and the wet weather conditions, has been some major challenges for the Personnel.

This requires early arrivals and late departures (working overtime), completing tasks within given timeframe that at times are not realistic; but through many sacrifices shown by the staff, the work has been carried out diligently, completing the field works albeit the rainy and rugged conditions.

The weather patterns being faced by Surveyors in areas they worked in varies and changes unexpectedly from light to heavy rains and in fluctuation patterns. Due to the dense forest and the steep terrain and long distance walking from base camp to subject area, Team resort to fly camp sleeping in makeshift tents on naturally uneven surface and bathing in creeks and streams.

Way Forward

Through sheer hard work, commitment, perseverance and honesty, Surveyors can diligently complete field works despite the many challenges. **Proper planning is the key to achieving targeted outputs-this will be the catalyst for the future.**



Kaa'ke Teke
Acting Chief Valuer
Farzana Khan
Acting Principal Valuer-Acquisition and Special Valuation
Meredani Tuitubou
Acting Senior Valuer-Statistics & Property Research
Ateca Cagilevu
Acting Senior Valuer Rating
Janice Reuben
Senior Valuer Rental Estate
OVERVIEW

The Valuation Division is the arm of the Department that provides professional valuation expertise to and on behalf of government. The Division is headed by the Chief Valuer who is also the chief adviser to government on all valuation related issues.

There are four main areas of valuation that the Division provides service to government and these are (i) *Land acquisition*, (ii) *Rental and Estate valuation*, (iii) *Rating valuation* and (iv) *Valuations for iTaukei land used for government purposes*.

Accordingly, the Division is divided into these four sections and in addition, a separate section under *Statistical and Property Research* collates and analyze real property information to be used for valuation purpose. This property information is also provided to private Valuers as well as to the general public at a nominal cost.

HIGHLIGHTS

The main highlight of the Valuation division includes the following;

Staff Realignment

The Ministry in order to address land management issues to be able to provide a more customer oriented service, embarked on new goal through the re-alignment of valuation staffs to achieve this.

This change concept was initially met with resistance by the staffs but after a serial of meeting and explanation by Management, this was finally accepted.

Payment of Municipal Council Rate Arrears

The government is required to pays city/town rates to Councils for its properties within municipal boundaries and as at the beginning of the year a figure of some **\$5million** was outstanding as arrears.

The Valuation Division undertakes a joint verification with all Councils and as a result a final figure of some **\$3million** paid to all Councils as final arrears.



The handover of the Levuka Town Rating Valuation Roll after the completion of the Rating valuation exercise.



Vaivaka villagers from Namosi during a consultation meeting on leasing issue for the proposed Health Centre



Area of inspection for acquisition purposes

Valuer General Conference

For the first time, the Chief Valuer has been invited by the Australasian Valuer General to attend their annual conference.

This was held in Melbourne from 21/10/13 to 26/10/13. The conference provides insights on how Valuer General in Australia and New Zealand undertake and advise their government on all Valuation issues.



Annual Symposium of the FIVEM.

CHALLENGES

One of the main challenges faced by Valuation Division is the effect of staff re-deployment under the re-alignment process.

Most of the senior and experience staffs were moved to other Division leaving a band of young inexperienced Valuers to continue maintain the professional services of valuation.

The Chief Valuer has a major task of providing guidance to these aspiring Valuers as well as maintaining the high standard valuation service.

Director Land Use Unit
Samuela Naicegucegu

A/Principal Valuer
Irena Nayacalevu

A/Principal Surveyor
Junior Ritesh Pratap

OVERVIEW

The Land Use Unit was established in July of 2010 as a direct result of the promulgation of the Land Use Decree of July 2010.

The framework development was an endeavour to address the, 'lack of access to land for both productive and social purposes' that was highlighted in the Report on the State of the Nation and Economy (2008) by the National Council for Building a Better Fiji (NCBBF) gathered through a nationwide consultation process.

In this regard, the Land Use Unit aims to facilitate a, 'mutually beneficial system that encourages the leasing of land for all purposes, designs incentives to ensure productive utilization of the land, and ensures equitable returns for both tenants in the use of the land and landowners in the leasing of their land' (RDSSED, 2009)



In 2013, the Land Use Unit headed by the Director Land Use, Mr Samuela Naicegucegu with a total staff roll of 45 staff members facilitated the necessary service to ensure the achievement of the objects of the Land Use Decree 2010.

Services provided by the unit include public relations services, land surveying and valuation, land conveyance services, land capability identification and geospatial information services. All services and processes align directly to MLMR corporate, strategic and service direction statements.

Highlights

- The issue of a lease for 687.97 hectares of prime cane land within the Seaqqa sugar cane belt to Fiji Sugar Corporation. The Land owning unit, the members of Mataqali Devo of Natua, Macuata were paid out a premium of \$220, 000 in February, 2013 as a condition of the issued lease;
- The issue of a Residential lease to Ministry of Local Government for the relocation of 7 households at Wailekutu Settlement;
- The establishment of the Land Use Unit at Manager West office; and
- The FIG PACIFIC SID SYMPOSIUM Novotel Lami on 18 – 20th September and organized by FIG & Ministry of Lands and Mineral

Staff development throughout the year consisted of both overseas and local trainings which centred on Geospatial Information Systems, Disaster Risk Management, Sustainable Development and Good Governance Trainings and Workshops.

A total of 6 overseas trainings were attended by staff of the unit whilst local trainings and workshops included those coordinated in house, by PSC and by NGOs. The Land Use Unit was consistently represented at MLMR sports and social activities of 2013.

Three years from inception LUU ventures on with growing clarity in its bid to provide solutions that would address the interests of both land owning units and tenants in a holistic and equitable manner to enable better utilisation of idle land.



'...the Land Use Unit aims to facilitate a 'mutually beneficial system that encourages the leasing of land for all purposes, and designs incentives to ensure productive utilization of the land...'

Akata Takala*Act Director***Malakai Vakautawale***Act Principal Geospatial Officer (FGIS)***Meizyanne Hicks***Act Principal Geospatial Officer (Mapping)***Jone Cavu***Act Principal Plan Examiner***SECTIONS**

1. Fiji Geospatial Information Systems
2. Aerial Survey
3. Cartography
4. Draughting Office
5. Statutory Office
6. Plan Examination

OVERVIEW

In the past maps were used to locate people and objects. Today this has changed into a complex digital environment where geospatial information supports a wide range of government, business and community activities and is vital to decision making.

The Geospatial Information Division in its capacity as the custodians and providers of base geospatial information has in 2013 supported interested stakeholders to achieve their targets.

While this support was being provided, the Division continued with its core functions that are shared amongst its 6 sections which performed tasks such as:

- Providing efficient mapping and aerial photography services
- Coordinate and implement land computerize system and the ultimate establishment of a national Spatial Data and land tenure system
- Development and coordinate cadastral and land tenure system
- Providing efficient information and statistics on status and rights to land
- Support for the Land Reform initiative

Major Projects

Together with carrying out its core functions, the Division has been tasked with 3 Capital Projects and there are





National Land Register – where this project will allow for the integration of all land information in Fiji which can facilitate effective and efficient land reform policies and augur well with the government initiatives for proper land use and management to support economic development as outlined in the PCCPP and the PDSSD

National Land Use Master Plan – the identification of economic viability of each land development type or use and in which area. One of the key measures and actions prescribed in Pillar 6 of the Charter is for the establishment of a Land Use Development Plan.



Aerial Triangulation – as part of the National Mapping Programme, a photo control survey of 127 points was undertaken for Western Viti Levu, where these measured points will be used on aerial photography for the updating of the 1:50,000 topographic map series using.



Highlights

- ❖ Facilitation of the FIG Symposium
- ❖ Reviving of the FIC Meetings
- ❖ Establishment of the GIS /RS User Group Meetings

Isireli Nagata*Asst Director***Raijieli Baleiwai***Principal Scientific Officer (Environment)***Raymond Mohammed***Act Principal Scientific Officer
(Mines Engineer)***Nilesh Karan***Act Principal Technical Officer
(Tenement)***SECTIONS**

1. Inspectorate
2. Tenement and Resources Geology
3. Environment

**OVERVIEW**

The Mining Division is one of the major Divisions within the Ministry that generates revenue for the Government.

The Mining Division is responsible for using best practice, stronger customer focus to promote, facilitate and maintain a competitive minerals sector for Fiji that is beneficial to all stakeholders through:

- I. Ensuring effective and efficient development of Fiji's mineral sector through regulatory framework that exists in the Mining Act, the Explosives Act, the Quarries Act and the Environmental Management Act, and
- II. Responsible to formulate, review and offer advice on policies; administer mining tenement; environmental monitoring and protection, social impact assessment liaison.

As the regulator of Fiji's mineral, the Mining Division continued with its core functions that are shared among its 3 sections which performed tasks such as:

Inspectorate Section is responsible for carrying out the duties listed under Output 5:

- I. Project assessment (explosives import/storage/use/transport, Site Inspections and Investigations, Licence/Permits processing for Explosives and Fireworks (Refer to Table 6).
- II. Review and enforcement of Mining, Quarrying and Explosive and Explosives regulations
- III. Regular inspections and monitoring of all mines and quarries to meet the regulated standards imposed on their activities.

This is achieved by developing clear approval and assessment process for exploration, mining and quarrying prospects. Key prospects and data are updated, application processes are streamlined, and administering and managing of exploration, petroleum & exploration licences.

Exploration companies spent a total of \$47,052,956.88 from 2012 to 2013 while gold and silver production decreased (Refer to Table 7). The decrease in the production was due to a change in mining methods introduced by the General Manager of Vatukoula Gold Mines whereby underground ore production was generated from slope mining.

Production also decreased because of a lack of tailing storage facility and the delay in the proposed Tailing Storage facility due to land issues.

Bauxite mined for export increased in 2013 when compared to 2012 (Refer to Table 8).

Nine stakeholders meetings were held regarding the Namosi Joint Venture on exploration and mining was held. In addition, twenty four meetings were held with stakeholders on the other advanced prospects.

The Unit also conducted eighty three community awareness and promotions programme to encourage them to be supportive towards mining and also for their information.

Environmental Section is responsible for carrying out the duties listed under Output 10:

- I. To manage the environmental and community policy and regulatory processes regarding Fiji's mineral industry
- II. To monitor and enforce regulations and statutes that manages explorations and development in the industry and oversee that it is within a sustainable framework.
- III. To regularly liaise with stakeholders including landowners to inform interested parties of environmental issues in any development.
- IV. To offer advice to any interested party when required

This is achieved by assessing Environmental Impact Assessments for proposed developments in the industry; conducting regular environmental monitoring of all existing mine sites, quarry sites and other developments; assisting other departments in the enforcement of the Environmental Management Act 2005 in aspects of environmental issues if required; and conducting awareness program around areas of development and to the public when required.

The Unit conducted thirty nine inspections to monitor mines and quarries for total compliance with the environmental Act. This is apart from the weekly monitoring on the Namosi Copper Prospect during exploration and rehabilitation site work.

Highlights

The review of the Mining Act – a critical government output; was our major highlight this year.

The Eleventh (11th) draft of the Mineral Exploration and Exploitation Decree (MEED) is with the Solicitors General's office. The Mineral Development Technical Committee was revived to review the MEED during the year. UNDP also provided assistance in the review of the MEED through the American Bar Association, who had provided their services on a pro bono basis based on a Memorandum of Understanding.

Revenue

The total revenue collected from the Mines Division was \$531,082.74 (Refer to Table 9).

Outlook for 2014

Amex is expected to start mining of iron sand from the Ba Delta in Late 2014. The Ground Breaking ceremony for the construction of storage facility will be held in early 2014 at the identified site at Lautoka Wharf.

'...the main highlight of the Division was the review of the Mining Act – a critical government output...'



Apete Soro*Assistant Director***Jonati Railala***Principal Technical Officer***Illaitia Dakonivalu***Act Principal Scientific Officer***SECTIONS**

1. Hydrogeological Section
2. Drilling Section
3. Seismology Section
4. Laboratory Section

**OVERVIEW**

The Geological Services Division provides technical services and geological hazard information to the public and private sector. These include, Seismology & Geo-hazards (monitoring of earthquakes, tsunamis. The Division is also tasked with the responsibility of developing groundwater resources in Fiji (groundwater assessment & development), Drilling for groundwater and geotechnical purposes and Chemical Analysis (water, mine and quarry effluent, mineral samples).

The Hydrogeological Section is responsible for the Policy paper on National Water Resources and Sanitation as well as the Groundwater Resources management and Exploitation Policy paper as listed under Out 1 as well as developing groundwater resources around Fiji as listed in Output 3.

Amendments, in accordance with the 2013 Constitutions, were being incorporated in the National Water Resources and Sanitation Policy paper to be submitted to Cabinet for endorsement.

The Groundwater Resources Management and Exploitation Policy has undergone three rounds of stakeholders consultation and was also being amended to see that it also incorporated the necessary provision of the 2013 Constitution.

The Division has been tasked with two major capital projects :

- I. Groundwater assessment and development for Small Islands,
- II. Groundwater assessment and development for Small Islands

The Division over achieved its target of 24 assessment for Groundwater sources investigations with 47 assessment being carried out. It should be noted that development for groundwater is a request based

service and only favorable hydro geological outcomes will lead to borehole drilling.

Two boreholes were drilled at Nananu for commercial purposes with one borehole being recommended fit for commercial use as it meets WHO Standards for drinking water quality whilst the other may require treatment to comply with such quality standard.

The Hydrogeological Section and the Drilling Section did not achieve its target of drilling twenty boreholes for the community. Only fifteen boreholes were drilled and developed due to constant drilling machine breakdown, wear and tear, unavailability of spare parts locally as well as substandard repair and maintenance in the past. Ten of the wells were drilled successfully, with two of them with low groundwater yield but is used by the community, two of the boreholes are awaiting evaluation before community use, two wells were abandoned due to low groundwater yield and one site, a second well was being attempted (Refer to Table 4).

The Hydrogeological Section was also able to conduct thirteen well developments at various locations where primary focus was on borehole cleaning/flushing and quality and quantity test.

The Drilling Section, in addition to drilling for groundwater also contributed to Output 4 through the Geotechnical drilling work. This is demand driven. At the end of the year the Geotech drilling team completed 20 geotech test holes (Refer to Table 5).

The Seismology Section contributed to Output 4. The Section continued with the routine monitoring of seismic activities and tsunami warnings where.

detection of events in Fiji as well as in the region were analyzed to confirm potential risk it may pose. A total of 951 local events and 2193 regional events were detected and 144 Media Releases issued.

The Section had achieved its target of 88 centers for earthquake & tsunami awareness consultations focusing on coastal communities (schools/villages/settlements). Coastal areas covered were along northern coast of Ovalau, Moturiki and also the southern and northern coast of Tailevu. Other locations covered were DAV Girls College, Dreketi Village, Ministry of Finance, Rotuma Island, Yavusania and Naikeleyaga Village.

The CTBTO Monasavu civil works has been completed and equipment configuration is still on-going with continued visits from the Commission Headquarters in Vienna and counterparts of IRIS/IDA University of California.

The Laboratory Section has been flooded with requests for water sample analysis of geochemical and some microbiological analysis and had far exceeded their yearly target of 320 with 353 analyses completed.

The Laboratory did not take delivery of the AAS Machine after the Government Tender Board approved the tender but due to new criteria set by the Fiji Procurement Office waiver of such request was not approved by the Tender Board.

The Geological Services Division also contributed to Out 13 by drilling fifteen boreholes to improve access to sustainable clean drinking water for the community. The provisions of boreholes have rippling effects towards combating poverty in local communities.

Highlights

- One of the highlights for the Division was the approval of \$2.6M for the purchase of a new drill rig and all accessories.
- Another highlight was the completion of the CTBTO Monasavu Building with all software's provided by the Commission Headquarters in Vienna and counterparts of IRIS/IDA University of California.
- A third highlight is the Seismology Unit joining the Oceania Regional Seismic Network (ORSNET). Under ORSNET the Fiji VSAT network was incorporated with other network (Tonga, Samoa, Vanuatu, Solomons, Cook Islands and others within the region as part of sharing data. It will not replace the current network but rather an added system that will contribute to our seismic network. Having more seismic station contributes to better and more accurate epicentral locations. The system uses

Outlook for 2014

The Division is looking towards the purchase and delivery of a new drilling rig to supplement the ones it currently has so that it can contribute to providing safe drinking water to the community at large. The Laboratory Section will be taking delivery of its AAS machine.

The Division is also looking towards the endorsement of the Groundwater Resources Exploitation and Management Policy paper by Cabinet as currently there is no regulations covering groundwater.



Wong Hen Loon
Asst Director

Semi Bolalailai
Act Principal Scientific Officer

Agnes Peter-Hansen
Senior Scientific Officer

Rigietia Ravuiwasa
Act Senior Scientific Officer

SECTIONS

5. Geological Mapping
6. Engineering Geology
7. Coastal Geology



OVERVIEW

The role of the Survey Division is to provide geoscience information to support and regulate development of mineral (metalliferous and industrial), hydrocarbon and geothermal resources within Fiji and its EEZ for the benefit of Fiji and to provide information on geohazards. This is done by selection of priority areas in Fiji for geoscience mapping and surveys, assessment of potential for mining, petroleum production, geohazards and quarrying areas in Fiji, providing geoscience information services, industry consultation and support for geotechnical surveys.

The Division continued with its core functions that were shared among its three sections which performed tasks such as:

- i. Carrying out geological mapping surveys
- ii. Conducting oceanographic processes study to mitigate for coastal erosion
- iii. Providing geosciences information to the industry and stakeholders, and
- iv. Carrying out of Geo-technical assessments on foreshore developments, landslide assessments and core logging for drill holes for development purposes.

Major Projects

Together with carrying out its core functions, the Division has been tasked with 1 Capital Projects and this is the Mineral Investigation Programme which started in 2008.

The Geological Survey division's major work undertaken for the year 2013 included the Viti Levu Mineral Investigation project in the Rakiraki Area (Vunitogoloa to Togovere) (Figure 1) and on Ovalau (Lovoni) (Figure 2). Six final Mineral Investigation Reports was completed during the year. These included the Saqani Report which was conducted in the last quarter of 2012 and incorporates result of samples collected using the handheld XRF Analyser.

Samples from the Saqani, Rakiraki Area and Lovoni in Ovalau showed anomalous values for silver which would need to be confirmed by analysis abroad.

The Mapping Section is responsible for Output 2 and the implementation of the Capital Project.

Fieldwork was carried out on the two (2) targeted areas in Viti Levu and Ovalau. Geochemical mapping was also undertaken to find out anomalies in the area based on previous explorations works. Field work maps that were digitized include:

Sample location maps (rock, sediment & ridge samples)

i. Traverse maps

ii. Geology & structural maps

iii. Alteration and mineralization map

As part of carrying out a Mineral Investigation Program on Lovoni, Ovalau, a seismic survey was conducted. Seven lines of 500 m in length was shot using the Shallow Seismic Refraction equipment at two areas where mineralisation was observed.

The mapping Section also conducted a Geological mapping reconnaissance survey in the last quarter of the year for Natural Waters of Viti Limited as part of their extension program to determine the extent of the aquifer which will contribute in establishing a buffer zone for current and future water extraction site.

MARINE SCIENTIFIC RESEARCH

Two Marine Scientific Cruises were carried out in Fiji's national waters and the Division had two staff onboard as observers. The first was collecting bathymetric data for laying of cable from Suva to Port Vila. The second was a Marine Scientific Cruise conducted by KIOST for mapping of Deep-Sea Minerals in their offshore tenement.

The Engineering Geology Section contributes to Output 4. The Section attended to twenty five (25) requests for geotechnical/geological assessments and played a significant role in seeing that the developments taking place around the country was safe so far as geotechnical issues were concerned.

In addition to the above the Division also provided forty two (42) geological/geotechnical consultation and services.

The Division assisted in the geological/geotechnical assessment for the relocation of Narikoso Village on Ono in Kadavu and also Tukuraki Village in Ba.

The Coastal Geology Section was also involved in the Waves of the Pacific Project with SOPAC. This Project is about improving the technical knowledge base, information and understanding of coastal hazards and wave energy along the Maui Bay at the Coral Coast.

Highlights

The highlight of the Division was when it took delivery of the Hand-held XRF Analyser and the Shallow Seismic Refraction Equipment which it uses for subsurface investigations. Only samples that show anomalous metal values will be sent abroad for confirmation.

Outlook for 2014

The Division is looking to mapping areas that has not been previously mapped so as to raise its prospectivity for mineral exploration by interested companies.



Director Corporate Services
J. Kunawalu

A/Manager Finance
T. Samisoni

A/ Manager Corporate Services
S. Talemaisainiai



Last year was a big year for the Corporate Services Division, made more significant with the reformative objectives government necessitated, to be implemented to a workforce numbering 400 plus with diverse professions and skill sets; all critical to the achievement of national goals on land reform and socio – economic development.

2013 marked significant strides for the CSD, in terms of laying the platforms for;

- recruiting, developing, motivating, rewarding and retaining capable personnel through good leadership and conducive working environment;
- molding team leaders and members to be agents of change;
- developing a sense of societal and environmental responsibility and;
- embracing a corporate culture, based on ethical and moral values

We responded to these organizational goals by implementing the following workforce development programmes;

1. **Internship Programme;** emphasis on the intake of qualified & skilled personnel at the first entry point of the ministry's workforce.
2. **Induction Programme;** orienting interns and newly appointed staff to expected behaviors', organizational objectives and government machinery.
3. **Training for Middle Managers;** developing the next level of management through innovative management training and exposure to leadership roles.
4. **Corporate Outlook;** promoting the ministry brand and adoption of a uniformed look by all staff, consistent with the organization's corporate visions.

5. **Capacity Building/Training;** embracing an organisational culture of competitiveness through the encouragement of staff up skilling and continuous, knowledge enhancement

"Providing employment is the best form of social service as it serves you, your county, your world-the entire society" Amit Kalantri

6. **Objective Staff Assessment;** ensuring that staffing decision is based on wholesome advice and continuous staff performance and development support.

7. **Community Responsibility;** encouraging staff participation in ministry activities with a worthwhile objective.

We delivered these results for a new and invigorated entity, focused on staff capacity development and significant organizational performance.



Creating a Ministry Brand Through Uniformity

Table of Contents

I.	Independent Audit Report.....	30
II.	Management Certificate.....	32
III.	Statement of Receipts and Expenditure.....	33
IV.	Appropriation Statement.....	34
V.	Statement of Losses.....	35
VI.	Trust Account Statement of Receipts and Payments	36
VII.	Notes to and forming part of the Financial Statements.....	37



11, Hosi, Naituku House
Mashima Street,
P.O. Box 2214,
Government Buildings
Suva, Fiji Islands



REPUBLIC OF FIJI
OFFICE OF THE AUDITOR GENERAL

Telephone: (679) 330 9032
Fax: (679) 330 3812
Email: info@auditorgeneral.gov.fj
Website: <http://www.oag.gov.fj>



Excellence in Public Sector Auditing

File: 486

2 June 2014

The Prime Minister and Minister for Lands and Mineral Resources
Ministry of Lands and Mineral Resources
P O Box 2222
Government Buildings
SUVA

Dear Sir

MINISTRY OF LANDS AND MINERAL RESOURCES
AUDITED AGENCY FINANCIAL STATEMENTS
FOR THE YEAR ENDED 31 DECEMBER 2013

The audited financial statements of the Ministry of Lands and Mineral Resources for the year ended 31 December 2013 together with my audit report on them are enclosed.

Particulars of the errors and omissions arising from the audit have been forwarded to the management of the Ministry for necessary actions.

Yours sincerely

Tevita Bolanavanua
AUDITOR GENERAL

cc Permanent Secretary for Lands and Mineral Resources

encl.

MINISTRY OF LANDS AND MINERAL RESOURCES
FINANCIAL STATEMENTS
FOR THE YEAR ENDED 31 DECEMBER 2013

MINISTRY OF LANDS AND MINERAL RESOURCES
FINANCIAL STATEMENTS
FOR THE YEAR ENDED 31 DECEMBER 2013

Table of Contents

INDEPENDENT AUDITOR'S REPORT.....	3
MANAGEMENT CERTIFICATE.....	5
STATEMENT OF RECEIPTS AND EXPENDITURE.....	6
APPROPRIATION STATEMENT	7
STATEMENT OF LOSSES.....	8
TRUST ACCOUNT STATEMENT OF RECEIPTS AND PAYMENTS	9
NOTES TO AND FORMING PART OF THE FINANCIAL STATEMENTS.....	10



8 Floor, Ratu Sukune House
Mea Avenue Green,
P.O. Box 2214,
Government Buildings,
Suva, Fiji Islands



REPUBLIC OF FIJI
OFFICE OF THE AUDITOR GENERAL

Telephone: (679) 330 9032
Fax: (679) 330 3812
Email: info@auditorgeneral.gov.fj
Website: <http://www.oag.gov.fj>



Excellence in Public Sector Auditing

INDEPENDENT AUDITOR'S REPORT

MINISTRY OF LANDS AND MINERAL RESOURCES
FINANCIAL STATEMENTS FOR THE YEAR ENDED 31 DECEMBER 2013

Scope

I have audited the special purpose financial statements which have been prepared under the cash basis of accounting and notes thereon of the Ministry of Lands and Mineral Resources for the year ended 31 December 2013, as set out on pages 6 to 17. The financial statements comprise the following:

- (i) Statement of Receipts and Expenditures;
- (ii) Appropriation Statement;
- (iii) Statement of Losses; and
- (iv) Trust Account Statement of Receipts and Payments.

The management of the Ministry of Lands and Mineral Resources is responsible for the preparation and presentation of the special purpose financial statements and the information contained therein.

My responsibility is to express an opinion on these special purpose financial statements based on my audit.

My audit was conducted in accordance with the International Standards on Auditing to provide reasonable assurance as to whether the special purpose financial statements are free of material misstatements. My audit procedures included examination, on a test basis, of evidence supporting the amounts and other disclosures in the special purpose financial statements and evaluation of accounting policies. These procedures have been undertaken to form an opinion as to whether, in all material respects, the special purpose financial statements are fairly stated and in accordance with government policies in Note 2 and the Financial Management Act 2004, so as to present a view which is consistent with my understanding of the financial performance of the Ministry of Lands and Mineral Resources for the year ended 31 December 2013.

The audit opinion expressed in this report has been formed on the above basis.

Audit Opinion

In my opinion,

- a) the financial statements present fairly, in accordance with the accounting policies stated in Note 2, the financial performance of the Ministry of Lands and Mineral Resources for the year ended 31 December 2013; and
- b) the financial statements give the information required by the Financial Management Act 2004 in the manner so required.

Without qualifying the accounts, attention is drawn to the following:

Section 15 of the Finance Instructions 2010 requires all payments to be recorded in the financial management information system (FMIS) and an Expenditure Ledger. The Ministry prepared its financial statements from the FMIS without reconciling to an Expenditure Ledger as there was none maintained by the Ministry.

I have obtained all the information and explanations which, to the best of my knowledge and belief, were necessary for the purpose of our audit.



Tevita Bolanavanua
AUDITOR GENERAL

Suva, Fiji
2 June 2014



MINISTRY OF LANDS AND MINERAL RESOURCES
MANAGEMENT CERTIFICATE
FOR THE YEAR ENDED 31 DECEMBER 2013

We certify that the financial statements:

- (a) fairly reflect the financial operations and performance of the Ministry of Lands and Mineral Resources and its financial position for the year ended 31 December 2013; and
- (b) have been prepared in accordance with the requirements of the Financial Management Act 2004, the Finance Instructions 2010 and Finance Circular 16/2006.


Savenaca Kaunisela
Acting Permanent Secretary

Date: 01/04/14


Timoci Samisoni
Manager Finance

Date: 02/06/2014

MINISTRY OF LANDS AND MINERAL RESOURCES
STATEMENT OF RECEIPTS AND EXPENDITURE
FOR THE YEAR ENDED 31 DECEMBER 2013

	Notes	2013 \$	2012 \$
Revenue			
Land and Property Rent	3 (a)	12,816,448	10,586,966
Rental for Quarters	3 (b)	370	1,337
Fees Charges, Fine and Penalties		715,575	629,460
Hire of Plants & Vehicles		1,586	5,376
License	3 (c)	71,877	88,705
Sale of Publications		1,423	90
Mining Fees	3 (d)	523,165	1,311,533
Chemical	3 (e)	11,823	11,772
Stamp Duty		243,197	186,986
Commission		4,244	1,567
Miscellaneous		813,878	1,207,628
Total Revenue		15,203,586	14,031,420
Expenditure			
Established staff		7,060,204	6,719,377
Government wage earners		854,201	799,210
Travel and communications		495,603	402,851
Maintenance & operations	3 (f)	7,885,794	4,393,006
Purchase of goods and services		1,159,126	843,707
Operating grants and transfers		32,100	31,651
Special expenditures		136,150	123,715
Total Operating Expenditure		17,623,178	13,313,517
Capital Construction	3 (g)	1,488,848	2,212,247
Capital purchases		237,915	307,909
Capital grants and transfers	3 (h)	429,593	2,169,825
Total Capital Expenditure		2,156,356	4,689,981
Value Added Tax		1,415,420	1,102,419
Total Expenditure		21,194,954	19,105,917

MINISTRY OF LANDS AND MINERAL RESOURCES
APPROPRIATION STATEMENT
FOR THE YEAR ENDED 31 DECEMBER 2013

SEG	Item	Budget Estimate \$	Changes (Note 4) \$	Revised Estimate \$	Actual Expenditure \$	Lapsed Appropriation \$
1	Established Staff	7,376,586	(114,100)	7,262,486	7,060,204	202,282
2	Government Wage Earner	903,001	-	903,001	854,201	48,800
3	Travel and Communications	509,079	90,300	599,379	495,603	103,776
4	Maintenance & Operations	6,297,403	1,748,108	8,045,511	7,885,794	159,717
5	Purchase of Goods & Services	1,414,650	(163,054)	1,251,596	1,159,126	92,470
6	Operating Grants & Transfers	32,100	-	32,100	32,100	-
7	Special Expenditures	148,953	-	148,953	136,150	12,803
	Total Operating Expenditure	16,681,772	1,561,254	18,243,026	17,623,178	619,848
8	Capital Construction	2,685,000	(793,813)	1,891,187	1,488,848	402,339
9	Capital Purchases	300,000	-	300,000	237,915	62,085
10	Capital Grants and Transfers	5,200,000	(4,765,250)	434,750	429,593	5,157
	Total Capital Expenditure	8,185,000	(5,559,063)	2,625,937	2,156,356	469,581
13	Value Added Tax	1,703,300	(308,474)	1,394,826	1,415,420	(20,594)
	Total Expenditure	26,570,072	(4,306,283)	22,263,789	21,194,954	1,068,835

MINISTRY OF LANDS AND MINERAL RESOURCES
STATEMENT OF LOSSES
FOR THE YEAR ENDED 31 DECEMBER 2013

There was no loss of money, revenue, and fixed asset recorded for the year ended 31 December 2013.

MINISTRY OF LANDS AND MINERAL RESOURCES
TRUST ACCOUNT STATEMENT OF RECEIPTS AND PAYMENTS
FOR THE YEAR ENDED 31 DECEMBER 2013

	Notes	2013 \$	2012 \$
Receipts			
Lands	5(b)	4,045,933	3,107,704
Minerals – Mining Trust	5(c)	523,469	1,167,913
Minerals – Non Mining Trust	5(d)	205,152	37,364
Total Receipts		4,774,554	4,312,981
Payments			
Lands	5(e)	2,947,138	1,032,632
Minerals – Mining Trust	5(f)	348,666	1,500,769
Minerals – Non Mining Trust	5(g)	327,800	495,159
Total Payments		3,623,604	3,028,560
Net Surplus		1,150,950	1,284,421
Balance as at 1 January		4,783,316	3,498,895
Closing Balance as at 31 December 2013		5,934,266	4,783,316

MINISTRY OF LANDS AND MINERAL RESOURCES
NOTES TO AND FORMING PART OF THE FINANCIAL STATEMENTS
FOR THE YEAR ENDED 31 DECEMBER 2013

NOTE 1 REPORTING ENTITY

The Department of Lands & Survey is responsible for the administration, development and management of all state land property. Activities include Land Valuation, Surveys & Mapping, Development and Maintenance of State Land, Land Use and Geographical Information System.

The Department of Mineral Resources undertakes studies in relation to geological hazards, mineral prospects and ground water development and manage the development of the Mining and Quarrying sector with a mandate under the Mining, Petroleum (Exploration and Exploitation) Quarries, Explosives and Continental Shelf Acts.

NOTE 2 STATEMENT OF ACCOUNTING POLICIES

a) Basis of Accounting

In accordance with Government accounting policies, the financial statements of the Ministry of Lands and Mineral Resources is prepared on cash basis of accounting. All payments related to purchases of fixed assets have been expensed.

The financial statements are presented in accordance with the Financial Management Act and the requirements of Section 71(1) of the Finance Instruction 2010. The preparation and presentation of a Statement of Assets and Liabilities is not required under the current Government policies.

b) Revenue Recognition

Revenues are recognized when funds are receipted by the Ministry of Lands and Mineral Resources.

c) Accounting for Value Added Tax (VAT)

All income and expenses are VAT exclusive. The Ministry on a monthly basis takes out VAT output on total money received for expenditure from Ministry of Finance. VAT input on the other hand is claimed on payments made to the suppliers and sub-contractors for expenses incurred.

d) Comparative Figures

Where necessary, amounts relating to prior years have been reclassified to facilitate comparison and achieve consistency in disclosure with current year amounts.

MINISTRY OF LANDS AND MINERAL RESOURCES
NOTES TO AND FORMING PART OF THE FINANCIAL STATEMENTS
FOR THE YEAR ENDED 31 DECEMBER 2013 *(continued)*

NOTE 3 SIGNIFICANT VARIATIONS

- a. Land and Property Rent decreased by \$2,229,482 or 21% due to the vigorous measures taken by the Ministry to collect the revenue and arrears due to Government. The Ministry has also encouraged our leasee to pay through Post Fiji especially where access to the Ministry office is an issue.
- b. Rental for Quarters decreased by \$967 or 72% and was mainly due to the PSC taking over the management of government quarters.
- c. License fees increased by \$16,828 or 19% due to increase in licenses issued by the Ministry during the year.
- d. Mining fees decreased by \$788,368 or 60% and was directly linked to the decrease in new mining license issued by the Ministry and decrease in renewal of mining license during the year.
- e. Revenue from Chemical Analysis increased by \$51 or 0.4% and was mainly due to increase in number of cases received from clients for sample testing of minerals.
- f. Maintenance and Operations increased by \$3,492,788 or 80% due to increase in budgetary provision for SEG 4, which practically increased the operation of the Ministry thus demanding the increase in fuel and oil for vehicles and repairs and maintenance of vehicles and equipments used in the Ministry's operations.
- g. Capital Construction decreased by \$723,399 or 33% due to the stall of some of the Ministry's major project and the prolong process of land development where the funds were not being expended in the current year.
- h. Capital Grants and Transfers decreased by \$1,740,232 or 80% and were due to the increase in provision being vired to other major operational targets.

MINISTRY OF LANDS AND MINERAL RESOURCES
NOTES TO AND FORMING PART OF THE FINANCIAL STATEMENTS
FOR THE YEAR ENDED 31 DECEMBER 2013 (continued)

NOTE 4 DETAILS OF APPROPRIATION CHANGES

a.) The Permanent Secretary for Lands and Mineral Resources and the Acting Minister for Finance approved the following virements for the Ministry of Lands and Mineral Resources:

From			To		
Virement No.	Expenditure Group.	Amount (\$)	Virement No.	Expenditure Group.	Amount (\$)
Lands 01/13	SEG 1	22,500	Lands 01/13	SEG 1	22,500
Lands 02/13	SEG 5	10,000	Lands 02/13	SEG 4	10,000
Lands 03/13	SEG 1	40,300	Lands 03/13	SEG 3	40,300
Lands 04/13	SEG 5	257,254	Lands 04/13	SEG 4	257,254
Lands 04/13	SEG 13	31,300	Lands 04/13	SEG 13	31,300
Lands 05/13	SEG 5	18,000	Lands 05/13	SEG 5	18,000
Lands 06/13	SEG 5	300	Lands 06/13	SEG 5	300
Lands 07/13	SEG 5	50,000	Lands 07/13	SEG 5	50,000
Lands 08/13	SEG 10	2,823,927	Lands 08/13	SEG 4	2,823,927
Lands 09/13	SEG 4	200,000	Lands 09/13	SEG 3	50,000
Lands 09/13			Lands 09/13	SEG 4	130,000
Lands 09/13			Lands 09/13	SEG 8	20,000
Lands 10/13	SEG 4	46,297	Lands 10/13	SEG 8	46,297
Lands 10/13	SEG 13	6,945	Lands 10/13	SEG 13	6,945
Lands 11/13	SEG 8	179,890	Lands 11/13	SEG 8	179,890
Lands 12/13	SEG 4	95,000	Lands 12/13	SEG 4	55,000
Lands 12/13			Lands 12/13	SEG 5	20,000
Lands 12/13			Lands 12/13	SEG 8	20,000
Lands 13/13	SEG 4	202,862	Lands 13/13	SEG 4	202,862
Lands 14/13	SEG 4	40,000	Lands 14/13	SEG 4	40,000
Lands 15/13	SEG 1	73,800	Lands 15/13	SEG 4	49,600
				SEG 5	24,200
MRD 01/13	SEG 8	60,000	MRD 01/13	SEG 5	60,000
MRD 02/13	SEG 10	46,297	MRD 02/13	SEG 8	46,297
Total		4,204,672	Total		4,204,672

MINISTRY OF LANDS AND MINERAL RESOURCES
NOTES TO AND FORMING PART OF THE FINANCIAL STATEMENTS
FOR THE YEAR ENDED 31 DECEMBER 2013 (continued)

NOTE 4 DETAILS OF APPROPRIATION CHANGES (continued)

- b) The Ministry of Finance had re-deployed the following funds from the Ministry of Lands and Mineral Resources Budgetary provisions:

No.	Expenditure Group	Particulars	Amount (\$)
1.	SEG 4	Rent – Land Lease to State	350,869
	SEG 4	Renewal of Native Lease	707,031
	SEG 4	Leasing Schedule A & B	178,477
2.	SEG 8	Development of State Land	820,110
3	SEG 10	Land Bank Investment	1,941,322
13	SEG 13	Value Added Tax	308,474
Total			4,306,283

NOTE 5 STATEMENT OF TRUST ACCOUNT

- a.) The balance brought forward figure \$4,783,316 was the closing balance of both Mining and Non-Mining Trust for the year ended December 2012. The Main Trust Fund Account for the Department of Lands was established in May 2012.
- b.) The details of receipts for the Lands Trust collected by monthly during the year is tabled below:

Receipts		
Month	2013 Amount (\$)	2012 Amount (\$)
January	1,350,111	-
February	867,692	-
March	114,144	-
April	242,159	-
May	391,913	1,079,085
June	57,079	849,609
July	91,173	36,130
August	79,372	57,594
September	45,843	19,321
October	86,885	11,510
November	310,476	135,355
December	409,086	919,100
Total	4,045,933	3,107,704

MINISTRY OF LANDS AND MINERAL RESOURCES
NOTES TO AND FORMING PART OF THE FINANCIAL STATEMENTS
FOR THE YEAR ENDED 31 DECEMBER 2013 *(continued)*

NOTE 5 STATEMENT OF TRUST ACCOUNT *(continued)*

c.) The details of the Mining Trust collected by monthly during the year is tabled below:

Receipts		
Month	2013 Amount (\$)	2012 Amount (\$)
January	6,457	1,035
February	22,415	84,191
March	-	90,081
April	176,452	23,347
May	122,262	4,087
June	51,483	231,406
July	8,571	24,305
August	35,654	615,994
September	30,577	5,000
October	3,973	32,400
November	2,250	26,132
December	63,375	29,935
Total	523,469	1,167,913

d.) The details of the Non-Mining Trust collected by monthly during the year is tabled below:

Receipts		
Month	2013 Amount (\$)	2012 Amount (\$)
January	-	-
February	977	-
March	-	300
April	-	-
May	61,197	16,769
June	4,500	-
July	21,666	11,171
August	-	3,678
September	18,161	-
October	27,816	-
November	14,195	4,725
December	56,640	721
Total	205,152	37,364

MINISTRY OF LANDS AND MINERAL RESOURCES
NOTES TO AND FORMING PART OF THE FINANCIAL STATEMENTS
FOR THE YEAR ENDED 31 DECEMBER 2013 (continued)

NOTE 5 STATEMENT OF TRUST ACCOUNT (continued)

e.) The details of payments from the Lands Trust during the year is tabled below:

Month	Payments	
	2013 Amount (\$)	2012 Amount \$
January	161,808	-
February	328,821	-
March	27,960	-
April	337,267	-
May	438,853	47,502
June	147,443	325,224
July	183,462	352,714
August	266,833	14,573
September	127,613	116,375
October	39,676	3,807
November	734,567	64,757
December	152,835	107,680
Total	2,947,138	1,032,632

f.) The details of payments from the Mining Trust during the year is tabled below:

Month	Payments	
	2013 Amount \$	2012 Amount \$
January	295	8,215
February	58,797	32,800
March	798	23,184
April	-	84,105
May	198,257	1,631
June	34,866	-
July	-	1,306,018
August	93	6,691
September	23,662	-
October	2,140	5,368
November	8,096	12,036
December	21,662	20,721
Total	348,666	1,500,769

MINISTRY OF LANDS AND MINERAL RESOURCES
NOTES TO AND FORMING PART OF THE FINANCIAL STATEMENTS
FOR THE YEAR ENDED 31 DECEMBER 2013 (continued)

NOTE 5 STATEMENT OF TRUST ACCOUNT (continued)

g.) The details of Non-Mining Trust Payments by monthly during the year is tabled below:

Month	Payments	
	2013 Amount (\$)	2012 Amount (\$)
January	200	365,319
February	4,143	7,209
March	1,140	15,327
April	1,980	38,996
May	465	14,474
June	11,157	7,952
July	12,198	12,425
August	13,330	7,897
September	36,424	-
October	17,640	1,490
November	194,800	9,833
December	34,323	14,237
Total	327,800	495,159

NOTE 6 ARREARS OF REVENUE

At balance date, the Arrears of Revenue Account for the Department of Lands and Survey had the following balances:

Account	2013 (\$)	2012 (\$)
Arrears of Revenue - Lands and Survey	25,228,981	22,729,013

NOTE 7 DRAWINGS ACCOUNT

At balance date, the Drawings Account for the Ministry had the following balances:

Drawings Account	2013 (\$)	2012 (\$)
Department of Lands and Survey	329,180	1,798,822
Department of Mineral Resources	132,306	731,439

MINISTRY OF LANDS AND MINERAL RESOURCES
NOTES TO AND FORMING PART OF THE FINANCIAL STATEMENTS
FOR THE YEAR ENDED 31 DECEMBER 2013 (continued)

NOTE 8 REVOLVING FUND ACCOUNT

At balance date, the revolving fund account for the Ministry had the following balances:

Revolving Fund Account	2013 (\$)	2012 (\$)
Department of Lands and Survey	974,127	960,060
Department of Mineral Resources	-	-

All other imprest and inter-departmental accounts of the Ministry were cleared at year end.

NOTE 9 OPERATING TRUST ACCOUNT

At balance date, the operating trust account for the Ministry had the following balances:

Operating Trust Account	2013 (\$)	2012 (\$)
Department of Lands and Survey	(1,269,158)	(934,195)
Department of Mineral Resources	-	(3,236)

LAND USE DIVISION

Table 1 Land Use Division Achievements 2013

ACTIVITIES	1 ST QUARTER	2 ND QUARTER	3 RD QUARTER	4 TH QUARTER	TOTAL
Public Awareness					
Public Awareness & Consultation with Landowners	10	7	9	5	31
Consultation with Investors / Tenants	7	5	2	1	15
Interests Registered to lease	3	6	8	55	72
Designation of Land					
Number of Land Designated	7	5	5	3	20
Area Designated	1328.591 ha	164.237ha	226.837ha	171.0114 ha	1890.6764
Leasing					
Number of I Taukei land leased	-	1	-	1	2
State Freehold/Buy Back	1	1	1	-	3
Surveying					
Number of Survey Plans lodged for Examinations	-	4	4	2	10
Land Acquisitions					
Number of Land Acquisitions	-	-	-	1	1
Compensation Paid Out	-	-	2	1	3
Number of Valuation	1	-	3	-	4
Trainings					
Number of Trainings	1	-	-	-	1
Conference/ Workshops	3	-	2	3	8

LAND MANAGEMENT DIVISION

Table 2 Land Management Division Achievements 2013

OUTCOME 16: LAND RESOURCES DEVELOPMENT & MANAGEMENT				
OUTPUT	STRATEGY	KPI	2013 TARGET	ACHIEVEMENTS
OUTPUT 11: Land Management Services	Preparation of documents	Number of documents prepared	900	HQ/DSCE – 656 DSW - 516 DSN - 255 Total 1,427
	Stamping of documents with Commissioner of Stamp duties	Number of documents stamped	650	1 st Qtr – 58 2 nd Qtr - 183 3 rd Qtr - 37 4 th Qtr – 145 Total - 423
	Lodge documents for registration with Registrar of Titles	Number of documents registered	400	1 st Qtr –43 2 nd Qtr - 127 3 rd Qtr - 103 4 th Qtr – 109 Total - 382
	Dealings on State Land	Number of dealings assessed and approved on existing leases progressed	600	HQ/DSCE – 657 DSW - 586 DSN - 70 Total 1,313

LAND VALUATION DIVISION

Table 3 Land Valuation Division Achievement

Output	Strategies	2013 Target	Timeline	Remarks
Output 11: Land Management Services, Lease, <u>Valuation & State Land Management</u> , Land Survey & Development	Rental Reassessment	172	31/12/2013	Total – 172 Completed –184 Pending – 14 26 files were not included in the list but were due for reassessment. TARGET ACHIEVED-106%
	New Lease (LMV/Premium/TAW)	30	31/12/2013	TOTAL-30 COMPLETED-58 TARGET ACHIEVED-193%
	Penal Rental	15	31/12/2013	TOTAL-15 COMPLETED-21 TARGET ACHIEVED-140%
	Government Renting	10	31/12/2013	TOTAL-10 COMPLETED-21 TARGET ACHIEVED-210%

GEOLOGICAL SURVEY DIVISION

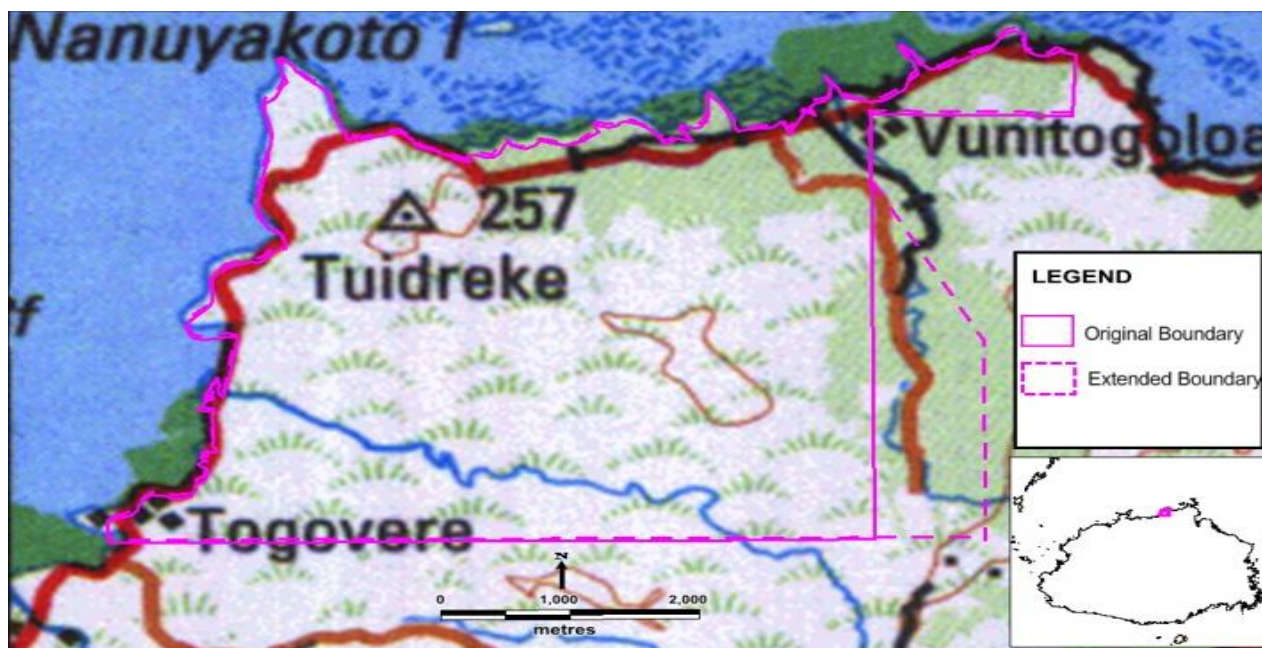


Figure 1 Mineral Investigation Project at Rakiraki



Figure 2 Mineral Investigation Project at Ovalau

GEOLOGICAL SERVICES DIVISION

Table 4 List of Community Boreholes drilled & status

Borehole No:		Commencement & Completion Dates	Locations	Depth (m)	Drill Rig	Updates
1	13/01	11/02 – 13/03/13	Veivatulua Parish, Lobau, Namosi	20	GEMCO	Drilling Successful
2	13/03	13/03 – 28/03/13	Veivatulua Parish, Lobau, Namosi	17	GEMCO	Drilling Successful
3	13/05	09/09 – 24/09/13	Naluwai FCDCL Chilling Centre, Naitasiri	70	TONE 300	Drilling Successful
4	13/07		Waibunabuna	55	TONE 200	Drilling Successful
5	13/12	21/10 – 06/11/13	Livanisasa, Ba	70	TONE 300	Drilling Successful
6	13/13	11/11 – 27/11/13	Varavu, Ba	40	TONE 300	Drilling Successful
7	13/14	03/12 – 11/12/13	Vatuvula Primary School, Tawake, Cakaudrove	20	Ross Drill Rig	Drilling Successful
8	13/16	28/10 – 06/11/13	Nagasauva village, Tawake, Cakaudrove	15	Ross Drill Rig	Drilling Successful
9	13/09	30/06 – 12/07/13	Nagasauva village, Tawake, Cakaudrove	30	Ross Drill Rig	Low groundwater yield
10	13/15	07/08 – 22/08/13	Nagasauva village, Tawake, Cakaudrove	35	Ross Drill Rig	Low groundwater yield
11	13/02	05/04 – 03/05/13	Bureivanua District School, Ra	51	TONE 300	Well development and groundwater evaluation pending
12	13/04	8/05 – 14/05/13	Soa village, Ra	70	TONE 300	Well development and groundwater evaluation pending
13	13/06	26/09 – 18/10/13	Salvation Army, Lomaivuna, Naitasiri	70	GEMCO	First attempt unsuccessful, second attempt pending
14	13/17	02/12 – 12/12/13	Balevuto, Ba	70	TONE 300	Low groundwater yield, well was abandoned
15	13/08	14/06 – 28/06/13	Nagasauva village, Tawake, Cakaudrove	25	Ross Drill Rig	Low groundwater yield, well was abandoned

Table 5 Geotech drill holes and locations

Location	RIG	No. of holes:
Vunidawa Sports Complex	EHV 3300	2
Korovou Sports Complex	EHV 3300	1
Waila City and Trunk Road	EHV 3300	6
Raiwai proposed city complex	EHV 3300	6
Princess Road proposed integrated residential complex	EHV 3300	5
TOTAL		20

MINES DIVISION

Table 6 Number of project assessments conducted

Project Assessment	No.
Inspections conducted for mines development	7
Underground safety inspections at Vatukoula Gold Mines Ltd (VGML)	2
Conducted Safety inspections on quarries	22
Quarry Closure issued (Laqere, Lomolomo)	2
Conducted tenement site visits	23
Mineral Export permits issued	278
Gold & Silver permits issued	48
Bauxite Export permits issued	9
Manganese Export permit issued	1
Prospector's rights issued	55

Table 7 Production of Gold (Au) and Silver (Ag) for 2012/2013

2012		2013	
Weight (oz.)	Value (FJD)	Weight (oz.)	Value (FJD)
42,209.1	\$ 132,805,724.04	37,687.6	\$ 95,709,675.04
12,084.3	\$ 596,549.10	13,101.6	\$ 551,591.71
57,293.4	\$ 133,402,273.14	50,789.3	\$ 96,261,266.75

Table 8 Production of Bauxite for 2012/2013

	2012		2013	
	Volume	Revenue		Volume
Bauxite wet tons	335,721	\$11,951,661.90	Bauxite wet tons	335,721
Bauxite dry tons	284,945	\$10,142,207.39	Bauxite dry tons	284,945

Table 9 Revenue collected for the year 2013 (Mines Division)

No:	Revenue	Revenue Collected (\$)
1	Renewal Fees	137,241.62
2	Mining Trust Fund Revenue	353,085.56
3	Explosives	14,074.75
4	Fireworks	19,455.25
5	Flares	225.25
6	Firearms	309.20
7	Matches	254.25
8	Prospectors Right	2,810.50
9	Blaster's Licence	2,488.25
10	Restricted Quarryman	316.30
11	Hoist Drivers	51.20
12	Quarryman	168.75
13	Mine Manager	146.90
14	Other Revenue	454.96

CORPORATE SERVICES DIVISION

Table 10 Overseas Training Attended

OVERSEAS TRAINING ATTENDED				
No	Officer	Training	Location	Funding
1.	Apisai Vulawalu Lands Officer- HQ	Planning and Management of Sustainable Cities	New Delhi, India 15 th Jan to 11 th Mar, 2013	PSC
2.	Asheeshwant Dayal Surveyor -DSN	Planning and Management of Sustainable Cities	New Delhi, India 15 th Jan to 11 th Mar, 2013	PSC
3.	Loriosio Raikivi STO -FLIS	Advanced Certificate in Geographical Information System and its Application in Resource Planning	India 4 th Feb to 29 th March, 2013	PSC
4.	Veniana Wainiqolo TO(II)	Advanced Certificate in Geographical Information System and its Application in Resource Planning	India 4 th Feb to 29 th March, 2013	PSC
5.	Samulea Naicegucegu DLU	Regional Workshop on Geo referenced Disaster Risk Management Information System in South East Asia	Bangkok, Thailand 20 th -22 nd Feb, 2013	
6.	Malakai Finau DMD	Deep Sea Mineral Law and and Contract Negotiations	Tonga 11 th -15 th Mar,2013	SOPAC
7.	Semi Bolalailai Senior Scientific Officer	Deep Sea Mineral Law and and Contract Negotiations	Tonga 11 th -15 th March, 2013	SOPAC
8.	Akanisi Kini TO(II) Land Use	Application Development using GIS and Remote Sensing	4 th Feb to 26 th Apr, 2013 India	PSC
9.	Lia Tuivuya TO(II) Land Use	Application Development using GIS and Remote Sensing	4 th Feb to 26 th Apr, 2013 India	PSC
10.	Akata Takala, A/AGI	Forum on Global Geospatial Information Management and Global Map for Sustainable Development	24 th April – 26 th April 2013 China	Chinese Govt - fully funded
11.	Filipe Waqabaca	Basic Software Application Technology for Development Countries, China	25 th Apr to 19 th June, 2013	PSC
12.	Asakaia Tabua, a/Principal Surveyor Control	Technical Seminar Reference Frame in Practice	21 st -22 nd June	
13.	Ani Tamata	Groundwater Theory and Application Training, Korea	24 th June to 9 th July, 2013	
14.	Mosese Tagicakibau, Director Lands	Technical Seminar Reference Frame in Practice	21 st -22 nd June	
15.	Laisenia Rawace	Seismology and Earthquake Engineering Course	24 th July to 13 th August, 2013	China
16.	Samuela Naicegucegu Director Land Use	Conference on 3 rd Session of the UN Committee of Experts on Global Geospatial Information Management	21 st July to 27 th July, 2013	UK

17	Tevita Boseiwaqa PSLMR	Conference on 3 rd Session of the UN Committee of Experts on Global Geospatial Information Management	21 st July to 27 th July, 2013	UK
18	Malakai Finau Director Mineral Resources	Meeting on 19 th Session of the International Seabed Authority (ISA)	15 th to 26 th July, 2013	Kingston, Jamaica
19	Malakai Finau Director Mineral Resources	Tsunami Regional Consultation Workshop - NZ	12 th – 16 th Aug, 2013	New Zealand
20	Malakai Finau Director Mineral Resources	Applied Science and Technology Meeting	5-11 th Oct 2013	Rarotonga, Cook Island
21	Sereima Koli , Scientific Officer	Sustainable Mining Development	23 rd Sept – 7 th December, 2013	
22	Akata Takala , Acting Assistant Director Mapping & Land Information	Chengdu Forum on GGIM, Global Map for Sustainable Development and Applications in Urban Hazards – China	15 th -17 th Oct, 2013	China
23	Tevita Boseiwaqa , PSLMR	15 th -17 th Oct, 2013 UNGGIM – China	9-14 th Oct	Korean Institute of Ocean Science and Technology
24	Kaake Teke Principal Valuer	Australasian Valuers Conference	23 rd – 25 th Oct	
25	Jale Kunawalu Director Corporate Services	Leadership Development Training,	11 th - 22 nd Nov, 2013	China
26	David Chang Acting Surveyor General,	Leadership Development training		China

Table 11 Local Courses Attended

LOCAL COURSES ATTENDED		NO. ATTENDED
1.	Leadership and Management Training Mod 1-4, In House	30
2.	IWP Writing, CTD	5
3.	Service Exams Tutorials	15
4.	Leadership and Management Cohort Module 1to 3	3
5.	SEA [TRAINING FOR CHAMPIONS] JJ'S	2
6.	CP2R Assessment Training- 23 rd April,- 25 th April 2013	74
7.	Motorbike Training	13
8.	In House Induction Training Suva and Lautoka	58
9.	In House Induction Training, 28 th – 29 th May	39
10.	Conciliators Training 22 nd – 23 rd May	4
11.	SEA Best Practices, 30 th -31 st May	1
12.	How to become a Effective PA, 17 th – 18 th June 2013 CTD	5
13.	Introduction to Workforce Planning, 19 th – 20 th June 2013 CTD	5
14.	OHS Mod 1 & 2, In House	38
15.	In House Grievance Procedure, Land Use unit [June]	38
16.	Training of Trainers 8 th to 9 th July, 2013, NTPC, Nadi	1
17.	Improving Writing Skills, Labasa	1
18.	Improving Writing Skills, Labasa	1
19.	Project Planning and Implementation 27 th 28 th July,	2
21.	Formulation of Cabinet Papers, 28/08 – 29/08/13	4
22.	Innovation for Process Improvement, 27/08 to 28/08	3
23.	PSC Reach Out Programme, 27/08 to 29/08/13	132
24.	Quality Circles, 22/08 to 23/08	2
25.	Employee Relations, 29/08 to 30/08	3
26.	Basic Management, 27/08 to 28/08	2
27.	Project Planning and Implementation, 13/09 to 13/09	1
28.	OHS Mod 1 & 2, 3/09 to 5/09	22
29.	Training for Middle Managers, 1/10 to 05/10	3
30.	OHS Mod 3&4, 29/10 to 30/10	22
31.	Training of Trainers Mod 4, 23 rd to 25 th Oct	1
32.	Training on Public Policy	1
33.	FPSSD Exams -	9
34.	ACP Workshop Lagoon Resort	45

