

2011



MINISTRY OF LANDS & MINERAL RESOURCES



ANNUAL REPORT

For the Year Ending 31 DECEMBER 2011

2011 ANNUAL REPORT

Table of Contents

Letter to the Honorable Prime Minister & Minister for Lands & Mineral Resources	1
Permanent Secretary's Overview	2
Roles & Responsibilities	3
Vision	4
Mission	4
Values	4
Key Output Areas	5
Pictorial Highlights	6-8
Management Structure	9
Training & Human Resources Development	10-11
Activities & Developments	12
Capital Projects 2011	13
Consolidated Financial Statements	14-22
Appendix 1: List of Senior Management	23



Letter to the Honorable Prime Minister & Minister for Lands & Mineral Resources



Ministry of Lands & Mineral Resources

Head Office
Fijian Trust Fund Complex
Nasele, Suva
(South Wing Ground Floor & First Floor)

P O Box 2222
Government Buildings, Suva, Fiji
Ph: (679)3313555 Fax: (679) 3239754
Website: www.lands.gov.fj



30th May, 2012

Honorable Ratu Voreqe Bainimarama
Prime Minister and Minister for Lands & Mineral Resources
Government Buildings
SUVA

Dear Sir,

I am honoured to present to you the Annual Report covering the work of the Ministry of Lands and Mineral Resources for 2011.

The report is submitted in accordance with obligations specified in my contract of employment with the Public Service Commission. It is also in line with the Finance Management Act, 2004.

With this report, the staff of the Ministry and I wish to express our gratitude for the privilege to work under your leadership. We also pledge our commitment towards achieving Government's national vision and expectations from Fiji's lands, minerals and groundwater resources sectors, as articulated in the People's Charter for Change, Peace and Progress and the Roadmap to Democracy and Sustainable Socio-Economic Development, 2009-2014.

Yours faithfully,

FILIMONE KAU
Permanent Secretary

Permanent Secretary's OVERVIEW



The year 2011 has demonstrated to be a very busy and challenging year in establishing a sustainable environment for development of Fiji's lands, minerals and groundwater resources. The important purpose and the beneficial focus were directed at the mineral sector for socio-economic growth and sustainability in maintaining more job opportunities and revenue generation for government and the nation as a whole.

Guided by the Ministry's vision and mission, this report represents a summary of activities/projects, staff, budget and the challenges met during the year—2011. It focuses not only on the major achievements

but also on many other related activities. The ministry continues to lose experienced staff and coupled with the Public Service Commission (PSC) standing policy of 'zero growth', it manages to rely on existing in-house staff to cope with the tasks at hand and ensure that key targeted initiatives are achieved, with the insight of projects being carried out in a professional manner and within the allocated budget. Training of staff continued to be our top priority to set an excellent platform and surely to promote upgrading of skills and confidence at all levels of operation. It is therefore important and critical that Human Resources Management and Development is promoted and enhanced at all levels to ensure sustainability and continuity in the activities and services of the ministry.

It is our positive effort and priority to establish a good integral relationship with our clients and stakeholders in our delivery of services in an efficient and effective manner. This integrated cooperation and important interest will factorise successful valuable development as aligned to the ministry's corporate values of good governance and partnership.

I sincerely hope that this ministry will continue in its effort to further benefit successful development of Fiji's lands, minerals and groundwater resources through prominent local and international interests.

Finally, my many thanks to our partner agencies, clients and staff for their dedicated support and contributions.

A handwritten signature in black ink, appearing to read 'Filimone Kau'.

FILIMONE KAU
Permanent Secretary

Roles & Responsibilities

The Ministry of Lands & Mineral Resources is made up of two Departments, namely the Department of Lands & Survey and the Department of Mineral Resources.

DEPARTMENT OF LANDS & SURVEY

The Department of Lands & Survey is a service department to other government agencies, statutory bodies and private sectors and its functions and responsibilities are categorized under the following entities:

- Land Use Unit
- State Land Administration
- Land Survey and Development
- Mapping & Land Information Database
- Valuation
- Corporate Services

DEPARTMENT OF MINERAL RESOURCES

The Department of Mineral Resources oversees and facilitates development of the country's mineral sectors and groundwater resources. It undertakes studies in relation to geographical hazards, minerals and groundwater development and manages the development of the Mining and Quarrying Sector with a mandate under the mining, petroleum (Exploration and Exploitation), quarries, explosives and the Continental Shelf Act.

The department consists of three divisions which constitutes the overall mining and groundwater resources. These are namely the;

- Geological Services Division
- Geological Survey & Information Division
- Mining Division



VISION, MISSION and VALUES

VISION	<p>“Effective, efficient and economical in administering and facilitating the development of Fiji’s land, mineral and groundwater resources for sustainable socio-economic growth.”</p>
MISSION	<p>“The Ministry’s priority is to implement Government’s reform initiatives on lands, mineral and groundwater resources for sustainable socio-economic growth at the national level, by 2012. The Ministry aims to provide outstanding administrative and facilitative services to its customers inclusive of both local and foreign investors. It will invest in technology to provide high quality services and it will work within the allocated public funds while striving to generate the appropriate revenue to assist with Government’s nation-building efforts. The Ministry’s leadership is dedicated to a management that recognizes the importance of its people. Importantly, the Ministry aims to gain a competitive advantage by using the constructive and creative abilities and energies of its staff. The Ministry will contribute to the economic strength of the nation and function as a good corporate citizen. Furthermore, the Ministry will recruit, develop, motivate, reward and retain personnel with exceptional qualities by providing excellent working conditions, superior leadership, recognition on the basis of performance, opportunity for growth, and a high degree of employment security. ”</p>
VALUES	<p>In addition to the Civil Service values contained in the Public Service Act 1999, the Ministry aspires to achieve the following values:</p> <ul style="list-style-type: none"> ■ RESPECT: To respect the diversity of ideas, backgrounds and cultures of our staff and stakeholders. ■ COMMITMENT: To be committed to working together to meet Government’s and the Nation’s expectations of the Ministry. ■ CUSTOMER SATISFACTION: To be responsive to the needs of our customers and provide effective and efficient delivery of services. ■ GOOD GOVERNANCE: To uphold the principles of good governance. ■ INTEGRITY & FAIRNESS: To make decisions objectively and ethically. ■ TRANSPARENCY & OPENNESS: To be transparent with all dealings with our staff and stakeholders. ■ ACCOUNTABILITY: To use all our resources wisely and economically. ■ PARTNERSHIP: To be committed to working in partnership with stakeholders and other government agencies.

KEY OUTPUT AREAS

There are twelve Key Output Areas that are used as benchmarks to measure the performance and successful achievements of the Ministry of Lands & Mineral Resources.

KOA 1: PORTFOLIO LEADERSHIP ADVICE & SECRETARIAT SUPPORT The Ministry contributes to the national development of its activities to strengthen and lead a resourceful coherent informative policy making process at the strategic, policy and issue specific levels of all state lands, minerals and groundwater resources

KOA 2: RESEARCH PUBLICATIONS—GEOLOGICAL SURVEY & DATABASE The process which provides and deals with the geological, analytical and samplings of minerals

KOA 3: CONSULTING SERVICES—GROUNDWATER BOREHOLES & DEVELOPMENT Consult and provide investigations, assessments, drilling, monitoring and approvals for groundwater resources based on the WHO standards

KOA 4: LICENSING, COMPLIANCE & MONITORING – GEOLOGICAL HAZARD ASSESSMENT & EARTHQUAKE MONITORING Strengthens and improves community response capacity in dealings with disasters and risks with effective, integrated and people-focused early warning systems on all hazards

KOA 5: LICENSING, COMPLIANCE & MONITORING—EXPLOSIVES, MINING & EXPLORATION TENEMENTS Strengthen resource management by proactive enforcement of provisions of the Environmental Management Act and other legislations

KOA 6: LICENSING, COMPLIANCE & MONITORING—SURVEY & VALUATION To encourage and strengthen secretariat support and coordination between agencies involved in land development to ensure land is put to its most productive use

KOA 7: CLIENT COMPLAINT INVESTIGATIONS – LAND MANAGEMENT SYSTEMS Implementation and formulation of a complaints resolutions mechanism put in place to investigate and resolve all customer complaints in a satisfactorily and professional manner

KOA 8: PUBLIC AWARENESS PROMOTIONS – MINING DEVELOPMENT OPPORTUNITIES Encourage & strengthen cordial relationship with clients including awareness on state land issues and developments in the industry with investors and landowners

KOA 9: MAINTENANCE OF LAND & GEOGRAPHIC INFORMATION SYSTEM Develop, enhance and implement advance Lands Information Products

KOA 10: LICENSING, COMPLIANCE & MONITORING—ENVIRONMENTAL LAW Enforce the Environment Management Act giving priority to early full enforcement for provisions for Environment Impact Assessment and Waste Management and Pollution Control

KOA 11: LAND MANAGEMENT SERVICES—LEASE & VALUATION & STATE LAND MANAGEMENT; LAND SURVEY & DEVELOPMENT Encourage dialogue and consensus in adopting appropriate land tenure legislation which has support of all stakeholders

KOA 12: LAND REFORM Initiate development of wide consultation forums on native and state land use in villages, provinces and all citizens in Fiji



PICTORIAL

Highlights

The Official Handing Over of the Nawailevu Bauxite Lease by the Honorable Chief Guest, the Prime Minister & Minister for Lands & Mineral Resources with His Excellency, Fiji's Ambassador to the People's Republic of China which was held at the Holiday Inn.



Opening of the **NAWAILEVU BAUXITE MINE**

By The Honorable Prime Minister
& Minister for Lands & Mineral Resources
Commodore Voreqe Bainimarama
in Nawailevu, Bua



PICTORIAL

Highlights

The Director Lands, Mr Mosese Tagicakibau and Investor Dr Hon during the lease agreement.



The Permanent Secretary, Director Lands and Investor Dr Hon during the lease agreement.



Celebrating one year of the Establishment of the Land Use Unit.



Signing in of the **VATUKOULA SOCIAL ASSISTANCE TRUST FUND**

Honorably witnessed by the
Solicitor General of the Fiji Islands
Mr Christopher Pryde

PICTORIAL

Highlights

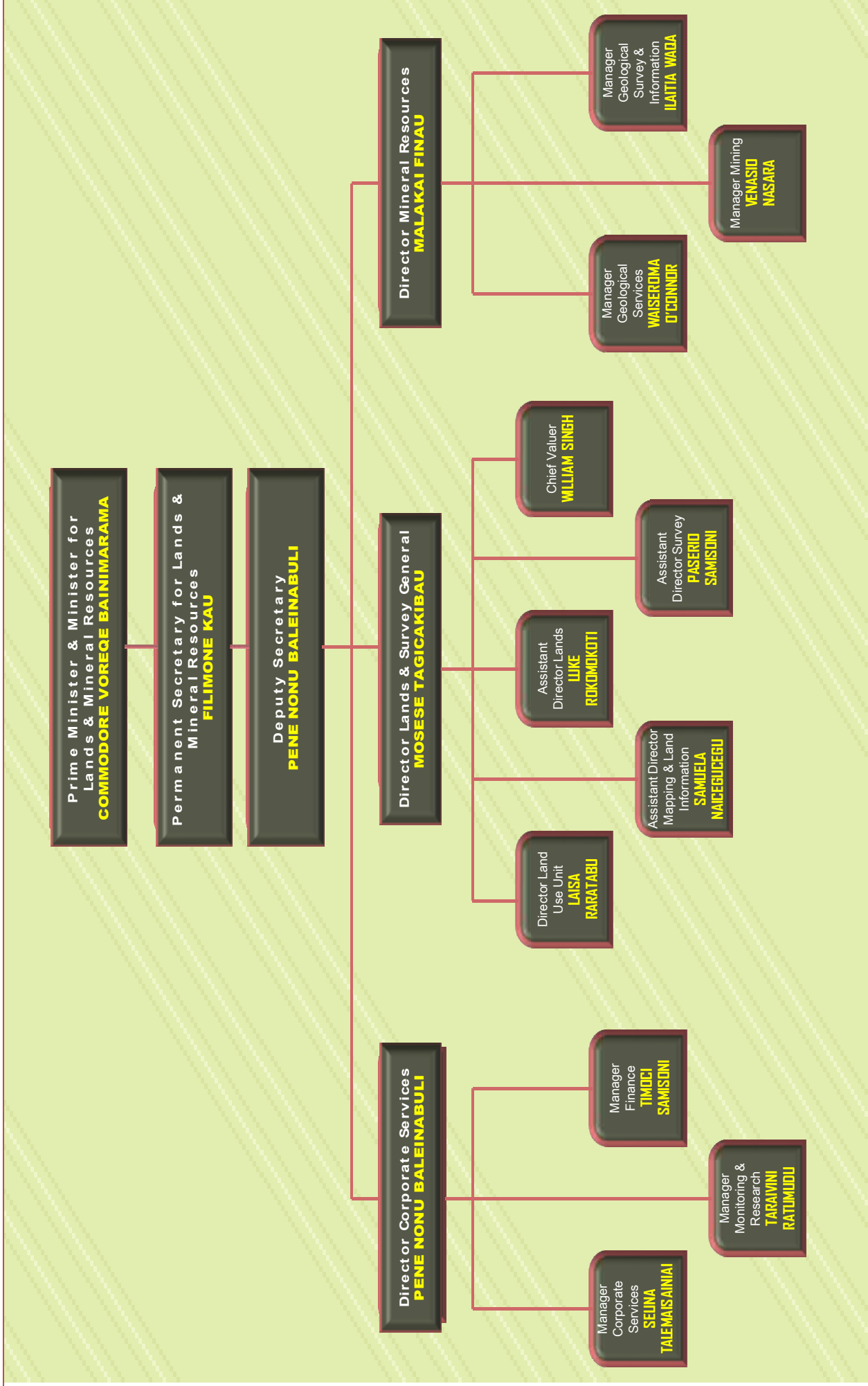
The Permanent Secretaries site visit to the Namosi SPL.



Government Officials, Landowners & the Namosi Joint Ventures representatives meeting at Nasirotu Village, Namosi.



MANAGEMENT Structure



TRAINING & Developments



The Ministry of Lands & Mineral Resources are directed towards enhancing and developing the organization in sustaining opportunities for human resources or employee development, both within and outside of the work place. The focus of all aspects of training and human resource development helps the organization and individual employees to accomplish their work goals in their service deliveries in lands, minerals, groundwater management, finance and non-traditional activities which lays the foundation and the framework for employees personal development, organizational skills, knowledge and abilities.

The Ministry's intentions are not only to accomplish its vision & mission but to adhere in improving their performances and skills upgrading. The capacity building of employees depended on their access of training and development which allows for development, potentially satisfying the vision & mission benefitting both the employee and the Ministry. These skills will fulfil and compensate the capacity building components as the Ministry strives to achieve its vision & mission.

LOCAL TRAINING

No.	Courses/Training/Programmes	Number of Attendees	Month Attended
01	Management Control & Public Expenditure	2	04-05 April, 2011
02	Executive Leadership Development Program	1	April 2011
03	Financial Reporting Analysis	1 1	21-22 April, 2011 04-05 May, 2011
04	Basic Public Senior Accounting	1 2	21-24 April, 2011 04-05 May, 2011
05	Public Sector Leadership Development Program	3	02-06 May, 2011
06	Training of Trainers {Module I} {Module II} {Module III} {Module IV}	1 1 1	18-22 October, 2011 02-06 May, 2011 07-08 July, 2011 12-14 October, 2011
07	Occupational Health & Safety Module I & II	4	06-08 May, 2011
08	Induction Workshop	8	09-11 May 2011
09	Disciplinary & Administrative Ethics	4	12-13 May, 2011
10	Government Machinery Procedure	2	13-17 May, 2011
11	Workforce & Succession Planning	1	24-25 May, 2011
12	Employee Relations	1	06-07 July, 2011
13	Management Development Program {Module I} {Module II}	1 1	18-22 July, 2011 03-07 October, 2011
14	Customer Services	23	16 August, 2011
15	Architectural Draughting	1	24-25 August, 2011
16	Effective Report Writing Skills	1	28-29 September, 2011
TOTAL		61	

TRAINING & Developments



OVERSEAS TRAINING

No.	Name	Courses	Country	Date
01	Jone Cavu	Seminar on Land Development & Housing Construction for Developing Countries	Beijing, China	21/10/11—03/11/11
02	Samuela Naicegucegu	Smart Korea Conference and Exhibitors	Seoul, Korea	26-29/10/11
03	*Malakai Vakautawale *Peni Tila	PCG/AP Training Workshop on Geospatial Support for Disaster Management	WUXI JIANGSU Province, China	06-13/11/11
04	Jonati Railala	Workshop on Climate Change and Natural Resource Management	Taipei, Taiwan	02-12/11/11
05	Rashmi Rita	MESCAL Action Research Workshop	Honiara, Solomon Islands	12-15/12/11
06	Loreen Raju	Short Course in Geo-informatics	India	26/09/11—18/11/11
07	*Loona Wong *Malakai Vakautawale *Asakaia Tabuabisataki	8th Pacific Islands Advanced Art 76 and Maritime Boundaries Development Workshop	Australia	11/07/11—22/07/11
08	Makereta Tawake	Workshop on Land and Housing Policy	Korea	15/09/11—01/10/11
09	Epeli Bola	Remote Sensing & GIS Applications for Coastal Hazard Mitigation and Sustainable Development of Pacific Islands	India	05-15/12/11
10	Rashmi Rita	Conference for Surveying and Spatial Sciences	Wellington, New Zealand	21-25/11/11
11	Aisea Tuamoto	In-depth Training for Participants from Pacific Countries on Remote Sensing and GIS applications for Coastal Hazards Mitigations and Sustainable Development	India	05-16/12/11
12	Thomas Fesau	Project Design Workshop	Vanuatu	11-15/04/11
13	Mosese Tagicakibau	Seminar on Land Development & House Construction for Developing Countries	Beijing, China	11-24/05/11
TOTAL		16		

ACTIVITIES & Developments

ክፍል
The Ministry of Lands &
Mineral Resources Staff at the
Corporate Plan Workshop
ገጽ



ክፍል
The Ministry of Lands &
Mineral Resources Staff doing their
Community Work in Labasa

ክፍል
SFCCO
Briefing,
Verification
Process & ACP
Review held
in Labasa
ገጽ



GROUNDWATER ASSESSMENT & DEVELOPMENT ON MAJOR ISLANDS (\$120,000)

Completed drilling boreholes in Macuata, Ra, Tailevu and Groundwater Monitoring for Vitilevu and Vanua Levu.

GROUNDWATER ASSESSMENT & DEVELOPMENT ON SMALL ISLANDS (\$100,000)

Completed drilling boreholes at Yaqeta Primary School and Yaqeta Village in Yasawa.

MINERAL INVESTIGATION (\$100,000)

Compiled three (3) Final Prospect Reports for Wainikoro-Koroiwa Prospect; Mouta Prospect and Solove Prospect.

PURCHASE OF TECHNICAL EQUIPMENT (\$100,000)

Installation of Lab Equipments (Microbiology Monitors—37mm) and chemicals from overseas.

SURVEY OF NAMOSI MINES (\$100,000)

NLC Survey of Namosi continued.

NATIONAL GEODETIC INFRASTRUCTURE (\$50,000)

Plan drawings for Tabia-Dreketi Controls & Galoa-Naboutini Controls to be verified.

SURVEY OF GOVERNMENT STATIONS (\$100,000)

Completed drilling boreholes at Yaqeta Primary School and Yaqeta Village in Yasawa.

DEVELOPMENT OF STATE LAND (\$300,000)

Completed Sealing of Road 2 and 3 at Nakorovou Subdivision, Wainibuku.

MAINTENANCE OF EXISTING SUBDIVISIONS (\$200,000)

Maintenance work at Bulileka Subdivision in Vanua Levu will be completed in 2012 and completed 2 Lots at Narere (Lot 20 & 25).

LAND BANK INVESTMENT (\$2,000,000)

Re-deployed \$3,000,000 and 75% was paid out to Mataqali Nabaramai and Mataqali Nakaubeqa—road acquisition leading up to the Natodre lands.

AERIAL TRIANGULATION (\$70,000)

Work to commence in 2012 due to weather conditions.

CAPITAL PROJECTS 2011



SURVEY OF MAHOGANY PLANTATIONS (\$300,000)

Survey of Mahogany Plantations at Galoa, Nukurua and Naboutini commenced.

REPLACEMENT OF SURVEY EQUIPMENT (\$100,000)

Achieved in the 3rd Quarter, 2011.

LAND USE PROGRAMMES (\$1,000,000)

Survey plans lodged for Burenitu, Navakaunu, Nakoso, Likuliku and work progressing in Nanukalou, Dedega and Vunivesi.

NATIONAL LAND REGISTER (\$150,000)

Completed 98% of State Land Register.

AERIAL SURVEY (\$400,000)

Aerial photography was hampered by continuous cloudy weather and work progress commenced.



CONSOLIDATED FINANCIAL STATEMENTS

**Ministry of Lands & Mineral Resources
Consolidated Financial Statements
For the year ended 31st December, 2011**

Content

- i** Independent Audit Report
- ii** Management Certificate
- iii** Consolidated Statement of Receipts and Expenditure
- iv** Consolidated Appropriation Statement
- v** Statement of Losses
- vi** Notes to and forming part of the Financial Statement
 - 1. Reporting Entity
 - 2. Statement of Accounting Policies
 - 3. Significant Variations
 - 4. Details of Appropriation Changes
 - 5. Arrears of Revenue
 - 6. Drawings Account
 - 7. Revolving Fund Account
 - 8. Operating Trust Account
 - 9. Main Trust Account

Independent Audit Report

For the year ended 31 December 2011

Scope

I have audited the special purpose financial statements which have been prepared under the cash basis of accounting and notes thereon of the Ministry of Lands and Mineral Resources for the year ended 31 December 2011, as set out on pages 6 to 11. the financial statements comprise the following:

- (i) Statement of Receipts and Expenditure;
- (ii) Appropriate Statement;
- (iii) Statement of Receipts and Payments – Trust Fund Account;
- (iv) Statement of Losses

The Ministry of Lands and Mineral Resources is responsible for the preparation and presentation of the special purpose financial statements and the information contained therein.

My responsibility is to express an opinion on these special purpose financial statements and the information contained therein.

My audit was conducted in accordance with the Fiji Standards on Auditing to provide reasonable assurance as to whether the special purpose financial statements are free of material mis-statements. My audit procedures including examination, on a test basis, of evidence supporting the amounts and other disclosures in the special purpose financial statements and evaluation of accounting policies. These procedures have been undertaken to form an opinion as to whether, in all material respects, the special purpose financial statements are fairly stated and in accordance with government policies in Note 2, the Audit Act and the Financial Management Act, so as to present a view which is consistent with my understanding of the financial performance of the Ministry of Lands and Mineral Resources for the year ended 31 December 2011.

The audit opinion expressed in this report has been formed on the above basis.

Qualifications

The Trust Account Statement of Receipts and Payments required under Finance Instruction 2010 Schedule 1 and Financial Management Act 2004 and appropriate accounting records were not provided for audit. The Main Trust account general ledger showed a balance of \$3,498,895.15 for they year ending 31 December 2011.

Qualified Audit Opinion

In my opinion

- a) except for the matter referred to in the qualification paragraphs, the financial statements present fairly, in accordance with the accounting policies stated in Note 2, the financial performance of the Ministry of Lands and Mineral Resources for the year ended 31 December 2011.
- b) the financial statement give the information required by the Financial Management Act 2004 in the manner so required.

I have obtained all the information and explanations which, to the best of my knowledge and belief, were necessary for the purpose of our audit.

Tevita Bolanavanua
AUDITOR GENERAL
31st May 2012

Management Certificate

For the year ended 31 December 2011


We certify that the financial statements:

- (a) fairly reflect the financial operations and performance of the Ministry of Lands and Mineral Resources and its financial position for the year ended 31 December 2011; and
- (b) have been prepared in accordance with the requirements of the Financial Management Act 2004, the Finance Instructions 2010 and Finance Circular 16/2006.



Mr. Filimone Kau
Permanent Secretary

Date: 31st March 2012



Mr. Timoci Samisoni
Manager Finance

Date: 31st March 2012

Consolidated Statement of Revenue and Expenditure

For the year ended 31 December 2011

	Notes	2011 \$	2010 \$
Revenue			
Land and Property Rent	3 (a)	12,320,797	11,459,683
Rental For Quarters	3 (b)	243,576	1,250,435
Fees Charges, Fine and Penalties		696,675	709,330
Reimbursement and Recoveries	3 (c)	-	36,645
License		24,425	36,704
Sale of Publications		1,892	1,387
Mining Fees		223,110	238,340
Chemical		804	660
Stamp Duty		183,261	195,083
Commission		1,594	2,336
Miscellaneous		2,381,287	2,227,128
Value Added Tax		-	35,181
Total Revenue		16,077,421	16,192,912
Expenditure			
Established Staff		6,657,535	5,686,809
Government Wage Earners		723,244	909,755
Travel and Communications	3 (d)	410,963	206,504
Maintenance & Operations	3 (e)	3,315,386	27,738,724
Purchase of Goods and Services	3 (f)	893,039	310,264
Operating Grants and Transfers	3 (g)	2,523,463	1,625,279
Special Expenditures	3 (h)	784,584	342,538
Total Operating Expenditure		15,308,214	36,819,873
Capital Construction		1,444,317	1,887,956
Capital Purchases		194,021	280,946
Capital Grants and Transfers		146,084	-
Total Capital Expenditure		1,784,422	2,168,902
Value Added Tax		1,581,340	4,002,925
Total Expenditure		18,673,976	42,991,700

The Consolidated Statement of Revenue and Expenditure is to be read in conjunction with the notes to and forming part of the Consolidated Financial Statements set out on pages 21 to 23.

Consolidated Appropriation Statement

For the year ended 31 December 2011

SEG	Item	Budget Estimate \$	Changes (Note 4) \$	Revised Estimate \$	Actual Expenditure \$	Lapsed Appropriation \$
1	Established Staff	7,326,619	-	7,326,619	6,657,535	669,084
2	Government Wage Earner	931,006	-	931,006	723,244	207,762
3	Travel & Communications	325,633	109,783	435,416	410,963	24,453
4	Maintenance & Operations	4,618,748	(722,640)	3,896,108	3,315,386	580,722
5	Purchase of Goods & Services	1,370,945	(226,571)	1,144,374	893,039	251,335
6	Operating Grants & Transfers	1,844,100	679,428	2,523,528	2,523,463	65
7	Special Expenditures	5,138,953	(3,470,000)	1,668,953	784,584	884,369
Total Operating Expenditure		21,556,004	(3,630,000)	17,926,004	15,308,214	2,617,790
8	Capital Construction	1,840,000	-	1,840,000	1,444,317	395,683
9	Capital Purchases	200,000	-	200,000	194,021	5,979
10	Capital Grants & Transfers	150,000	-	150,000	146,084	3,916
Total Capital Expenditure		2,190,000	-	2,190,000	1,784,422	405,578
13	Value Added Tax	2,024,200	(360,501)	1,663,699	1,581,340	82,359
Total Expenditure		25,770,204	(3,990,501)	21,779,703	18,673,976	3,105,727

The Consolidated Statement of Revenue and Expenditure is to be read in conjunction with the notes to and forming part of the Consolidated Financial Statements set out on pages 21 to 23.



Statement of Losses

For the year ended 31 December 2011

Department of Lands and Survey

There was no loss of money and fixed asset recorded for the year ended 31 December 2011.

Department of Mineral Resources

There was no loss of money and fixed asset recorded for the year ended 31 December 2011.

Notes to and Forming Part of the Financial Statements

For the year ended 31 December 2011

Note 1: Reporting Entity

The Department of Lands are responsible for the administration, development and management of all state land property. Activities include Land Valuation, Mapping, Development and Maintenance of State land and Geographical Information System.

The Department of Mineral Resources undertakes studies in relation to geological hazards, mineral prospects and ground water development and manage the development of the Mining and Quarrying sector with a mandate under the Mining, Petroleum (Exploration and Exploitation) Quarries, Explosives and Continental Shelf Acts.

Note 2: Statement of Accounting Policies

(a) Basis of Accounting

In accordance with Government accounting policies, the financial statements of the Ministry of Lands and Mineral Resources is prepared on cash basis of accounting. All payments related to purchases of fixed assets have been expensed.

The financial statements are presented in accordance with the Financial Management Act 2004 and the requirements of Section 71(1) of the Finance Instruction 2010. The preparation and presentation of a Statement of Assets and Liabilities is not required under the current Government policies.

(b) Consolidation of Accounts

The financial report consolidates the financial statements of the Ministry of Lands and Mineral Resources as stated in the Appropriation Promulgation 2009 and Annual Appropriation Act.

(c) Use of Estimates

The facility to allow the measurement and accounting of output cost has yet to be integrated in the Financial Management Information System (FMIS) of Government.

The preparation of the statement of Output Costs require the Ministry of Lands and Mineral Resources to make adjustments on the estimates of costs under each Budget Output. Actual results may differ from these estimates.

(d) Revenue Recognition

Revenues are recognized when funds are receipted by the Ministry of Lands and Mineral Resources.

(e) Accounting for Value Added Tax (VAT)

All income is inclusive of VAT while all expenses are VAT exclusive. The Ministry on a monthly basis takes out VAT output on total money received for expenditure from Ministry of Finance. VAT input on the other hand is claimed on payments made to the suppliers and sub-contractors for expenses incurred.

The VAT payment as per the consolidated statement of receipts and expenditures relates to the VAT input claimed on payments made to the suppliers and sub-contractors for expenses incurred and VAT payments to FIRCA. Actual amount paid to FIRCA during the year represent the difference between VAT Output and VAT Input.

(f) Comparative Figures

Where necessary, amounts relating to prior years have be reclassified to facilitate comparison and achieve consistency in disclosure with current year amounts.

Note 3: Significant Variations

- (a) Land and Property Rent increased by \$861,114 or 8% and were due to the enormous effort by the Ministry to collect arrears of revenue.
- (b) Rental for Quarters decreased by \$1,006,859 or 81% and was mainly due to the PSC decision to rent out government quarters to members of the public as well as the transfer of the quarters rent collection authority back to PSC.
- (c) Reimbursement and Recoveries reduced by \$36,645 or 100% because there was no previous years' recovery done by the Ministry during the year.
- (d) Travel and Communications increased by \$204,459 or 99% due to the high cost incurred on telephone usage on the 10 offices of the Ministry.

Notes to and Forming Part of the Financial Statements

For the year ended 31 December 2011

- (e) Maintenance and Operations decreased by \$24,423,338 or 88% due to the decrease in budgetary provision for SEG 4, having the funding for quarters and office transferred to PSC.
- (f) Purchases of Goods and Services increased by \$582,775 or 188% due to the increase in the 2011 SEG 5 budget provision, which had practically increased the amount of goods and services acquired.
- (g) Operating grant and transfers increased by \$898,184 or 55% due to the increase in grant paid for municipal council rates and SOPAC.
- (h) Special Expenditure increased by \$442,046 or 129% due to the large amount of compensations paid to landowners.

Note 4: Details of Appropriation Changes

- (a) The Permanent Secretary for Lands and Mineral Resources and the Acting Minister for Finance approved the following virements for the Ministry of Lands and Mineral Resources.

FROM			TO		
Virement No.	Expenditure Grp.	Amount (\$)	Virement No.	Expenditure Grp.	Amount (\$)
DV3301/11	SEG 4	233,200	DV3301/11	Lands—Various	233,200
DV3302/11	SEG 4	202,783	DV3302/11	Lands—Various	202,783
DV3303	SEG 4	45,000	DV3303	Lands—Various	45,000
DV3304	SEG 4	9,000	DV3304	Lands—Various	9,000
DV3305	SEG 4	160,000	DV3305	Lands—Various	160,000
DV33001/11	Lands—Various	559,428	DV33001/11	Minerals SEG 6	559,428
DV33002/11	SEG 4	16,311	DV33002/11	SEG 8	16,311
Total		1,225,722	Total		1,225,722

- (b) The Ministry of Finance had re-deployed the following funds from the Ministry of Lands and Mineral Resources Budgetary provisions.

No.	Expenditure Group	Particulars	Amount (\$)
1	SEG 7	Special Expenditure	3,470,000
2	SEG 13	Value Added Tax	520,500
TOTAL			3,990,500

Notes to and Forming Part of the Financial Statements

For the year ended 31 December 2011

Note 5: Arrears of Revenue

At balance date, the Lending Account and the Arrears of Revenue Account for the Department of Lands and Survey had the following balances:

Account	2011 (\$)	2010 (\$)
Arrears of Revenue—Lands and Survey	19,561,844	17,970,765

Note 6: Drawings Account

At balance date, the Drawings Account for the Ministry had the following balances:

Drawings Account	2011 (\$)	2010 (\$)
Department of Commerce	2,010,253	2,803,965
Department of Co-operatives	680,881	493,268

Note 7: Revolving Fund Account

At balance date, the Revolving Fund Account for the Ministry had the following balances:

Revolving Fund Account—Miscellaneous	2011 (\$)	2010 (\$)
Department of Lands and Survey	1,315,359	699,018
Department of Mineral Resources	-	10,081

Note 8: Operating Trust Account

At balance date, the Operating Trust Account for the Ministry had the following balances:

Operating Trust Account	2011 (\$)	2010 (\$)
Department of Lands and Survey	(852,533)	(2,067,488)
Department of Mineral Resources	146	(6,951)

Note 9: Main Trust Account

At balance date, the Main Trust Account for the Department of Mineral Resources had a balance of \$3,498,895.15.



Appendix 1

LIST OF SENIOR MANAGEMENT

Designation	Names	Duration (2011)
Permanent Secretary for Lands & Mineral Resources	Mr Filimone Kau	January–December
Deputy Secretary	Mr Pene Nonu Baleinabuli	January-December
Director Lands & Survey General	Mr Mosese Tagicakibau	January-December
Director Mineral Resources	Mr Malakai Finau	January-December
Director Land Use Unit	Ms Laisa Raratabu	January-December
Assistant Director Survey	Mr Paserio Samisoni	January-December
Assistant Director Lands	Mr Luke Rokomokoti	January-December
Assistant Director Mapping & Land Information	Mr Samuela Naicegucegu	January-December
Chief Valuer	Mr William Singh	January-December
Manager Corporate Services	Mrs Selina Talemaisainiai	January-December
Manager Finance	Mr Timcoi Samisoni	January-December
Manager Mining	Mr Venasio Nasara	January-December
Manager Geological Services	Mr William O'Connor	January-December
Manager Geological Survey & Information	Mr Ilai Waqa	January-December







MINISTRY OF LAND AND MINERAL RESOURCES